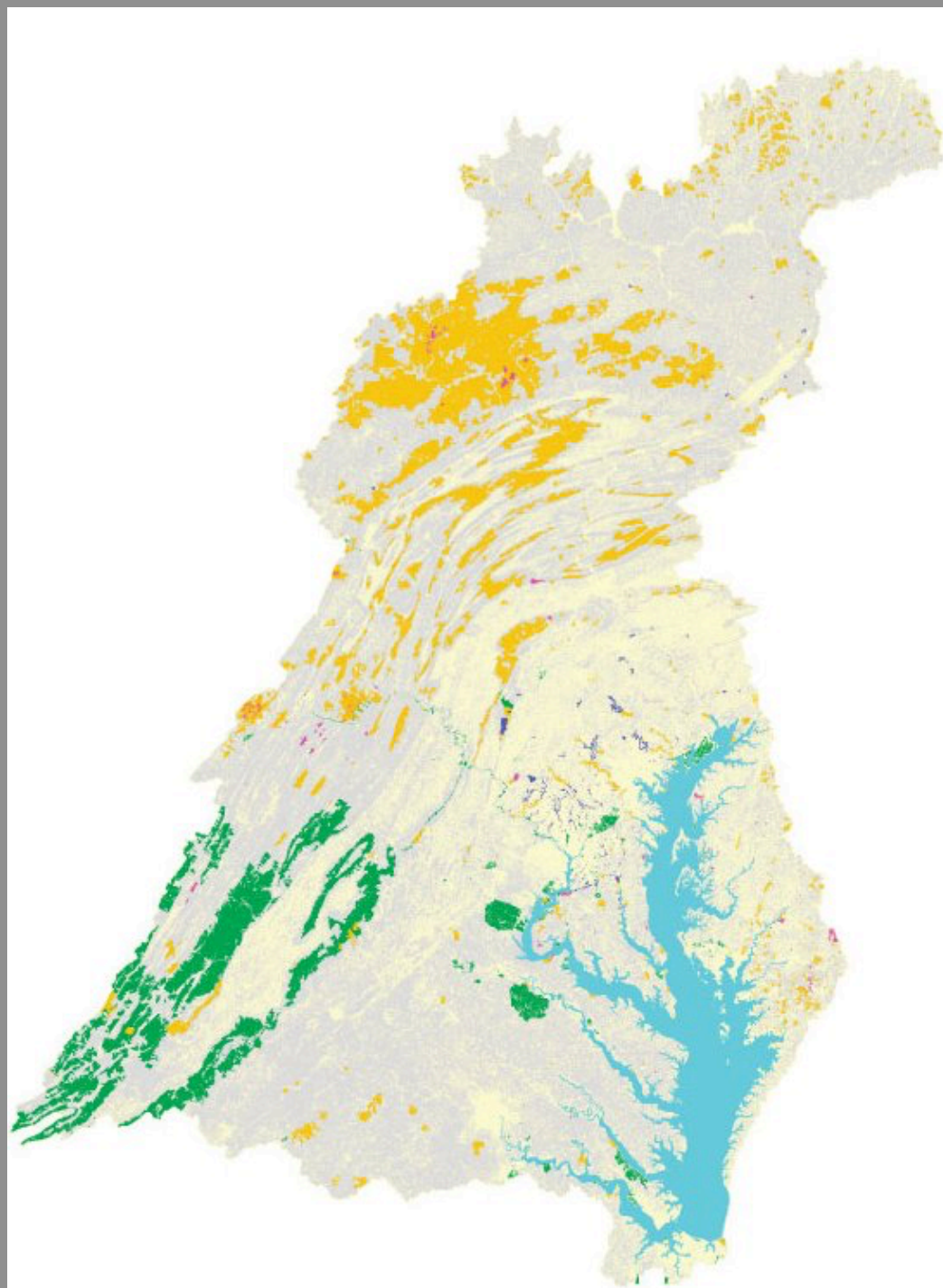


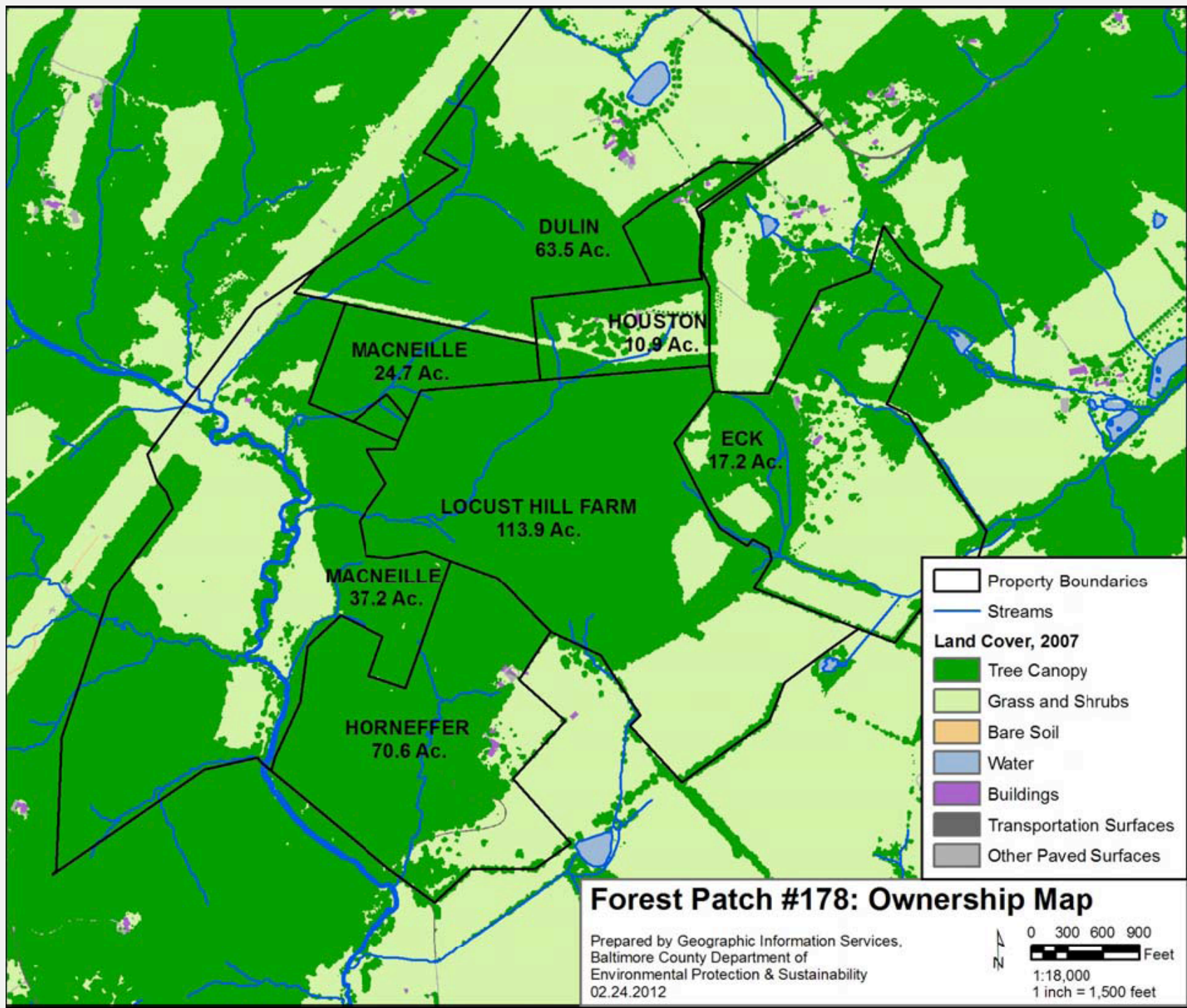
Landscape Scale Forest Management

Alliance for the Chesapeake Bay, Baltimore
County, Maryland Forest Service, Prettyboy
Watershed Association, Mar-Len
Environmental



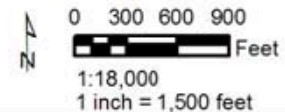
Landscape Scale Forest Management? How?





Forest Patch #178: Ownership Map

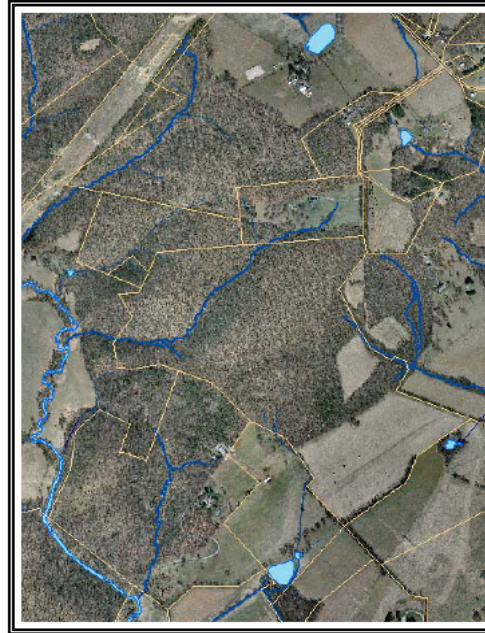
Prepared by Geographic Information Services,
 Baltimore County Department of
 Environmental Protection & Sustainability
 02.24.2012



FOREST HEALTH ASSESSMENT

for Forest Patch 178

A 341-acre Forested Block Owned by Multiple Landowners in the
Butler-Glyndon area of Baltimore County



A Healthy Woodlands Partnership



Forestry for the Bay
Craig Highfield, Program Manager
Mar-Len Environmental, Inc.
Leonard Wrabel, Consulting Forester

In cooperation with the Baltimore County Department of
Environmental Protection & Sustainability



February 2012



Assessment Findings

- FIDS Habitat & Stream Quality: **Healthy**
- Forest Sustainability: **Unbalanced size classes**
- Tree Stocking: **Overstocked**
- Tree Condition: **Significant undesirable growing stock**
- Regeneration: **Should be higher**
- Invasive plants: **High**

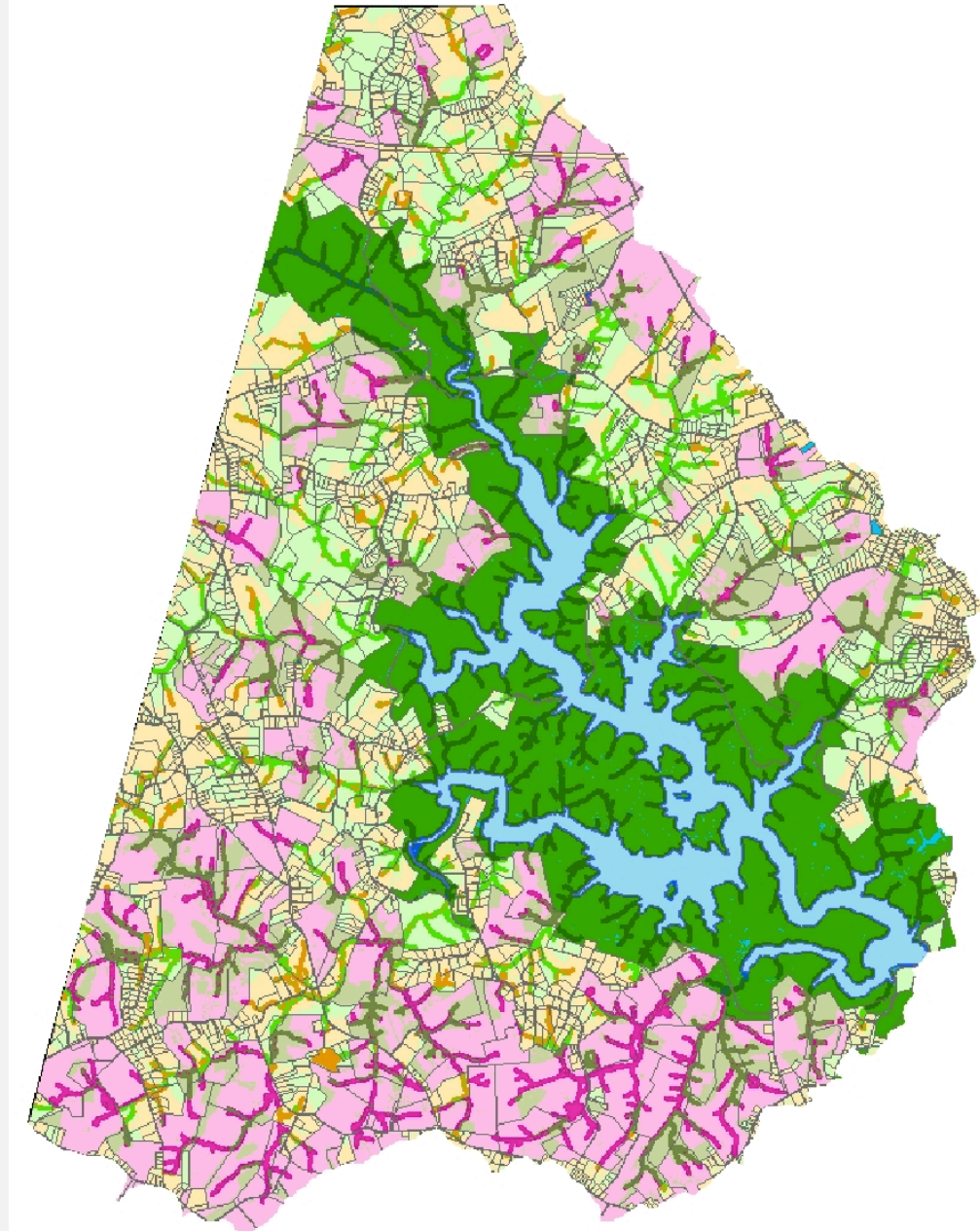
Lessons Learned: Five P's



- Patience
- Persistence
- Partners

2.0: Prettyboy Partnership

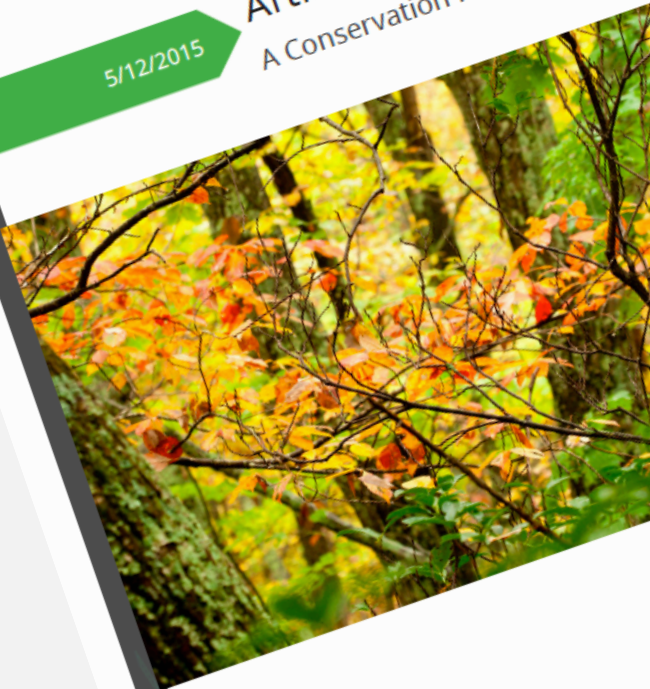
- Local forest characterization
- Targeted outreach
- Local partner: Prettyboy Watershed Alliance
- FSPs developed



2.0: Prettyboy Partnership

5/12/2015

Arthur Gompf property A Conservation Funding Assessment



County office at the Cub Hill Ranger Station on 9405 Old Harford Road near Carney, MD. Their phone number is (410) 665-5820.

Maximizing conservation cost share programs

In Maryland, the federal administered EQIP and state administered WIP can be used together to implement several forestry practices and lower your out-of-pocket expenses by up to 90%. Eligible landowners will need to enroll in each program separately but simultaneously. Full EQIP funding will be used for practice implementation and WIP funding will be determined in order to cover the cost share up to 90%.

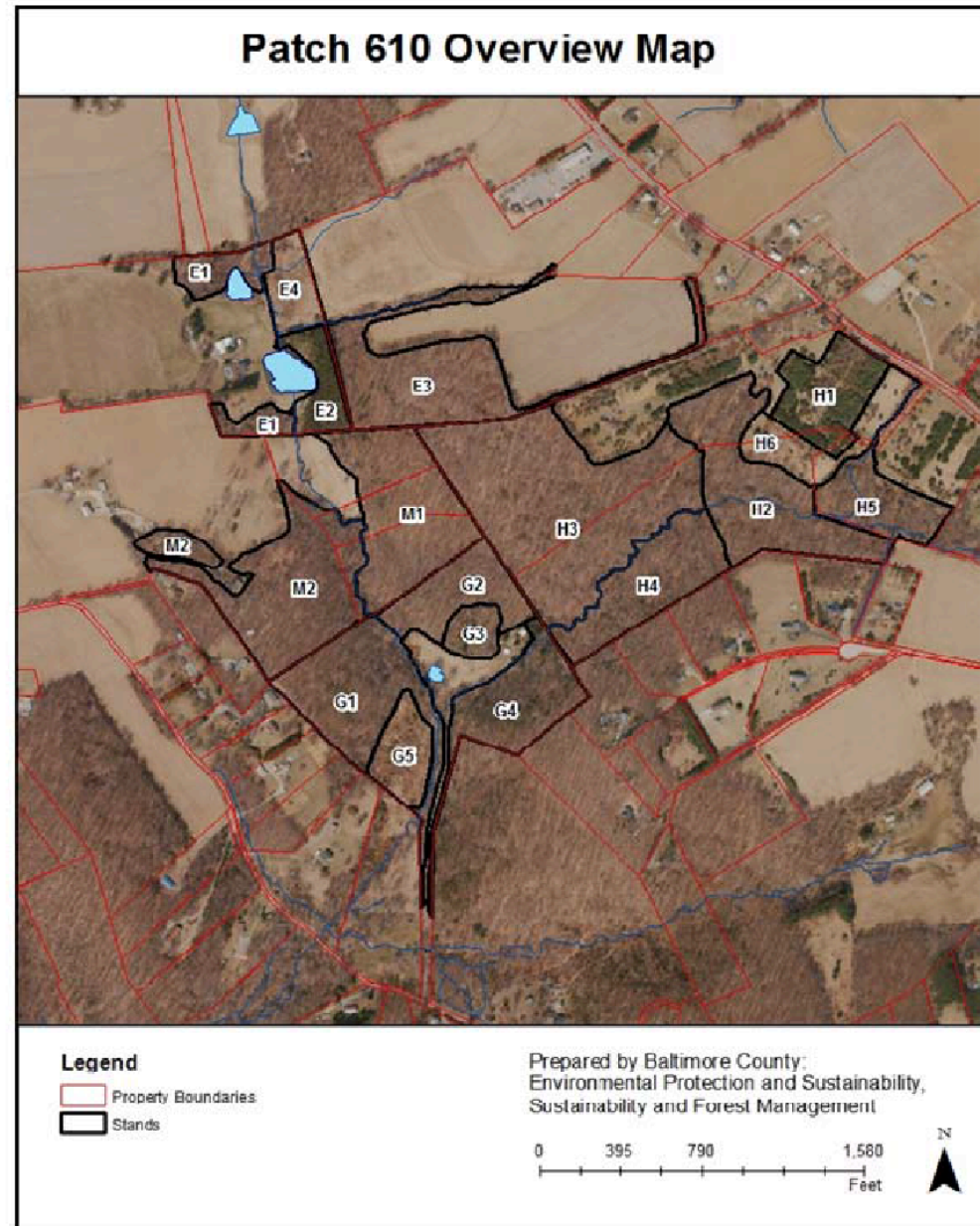
The cost share payments listed for practices below are for 2014 NRCS's EQIP program, which is estimated to cover 70% of the cost. Practice payments vary slightly for each year's program. MD's WIP will increase cost share to 90%. You are responsible for the remainder of the project cost.

- **Invasive plant control:** Invasive exotic plants aggressively invade woodland ecosystems disrupting forest regeneration and understory growth. Climbing vines can also damage the crown and overall growth of canopy trees. Invasive plants are managed by mechanical and chemical treatments or a combination of both. Cost share payments vary depending on type of plants, degree of infestation and method of practice - **\$20-\$475/acre**
- **Forest Stand Improvement** (referred to as Timber Stand Improvement in WIP). This practice promotes the growth and vigor of the highest quality trees in the stand by removing competing trees and reducing stocking levels or overall crowding. Cost share depends on the selected practice and age and condition of the stand - **\$86-\$1097/acre**. Maryland Forest Service is available to mark the trees to be removed for **\$12.00/acre**. *TSI funding can also be used to create canopy openings to promote understory growth that can improve wildlife habitat*
- **Upland agriculture fields** – Any portion of the open land is eligible for tree and shrub establishment. Practices vary from individual hand planting with deer protection **\$2.43/tree** or hardwood planting in 1-3 gallon pots at **\$2145.02/acre**. There is also cost share available for site preparation at **\$61.29 - \$173.71/acre** depending on existing type of vegetation and the method used.

Any field acreage is also eligible for cost share to be maintained as *early successional habitat*. Maintenance practices such as mowing and disking can be cost-shared at **\$147.16/acre** and **\$54.13/acre** respectively. *Establishing annual vegetation* (ie. seeding with native annual plants) can also be funded at **\$266/acre to \$359/acre** depending on the extent of the practice and the field

2.0: Prettyboy Partnership

- USDA NRCS Regional Conservation Partnership Program award
- Partnership with Glatfelter
- Prettyboy Resource Collaborative





forests.allianceforthebay.org