

SAF
NATIONAL
CONVENTION

Madison, Wisconsin
November 2-6, 2016

www.safconvention.org

Looking for Plant Image Analysis Tools?

We Offer these Reliable and Accurate Software and Systems:



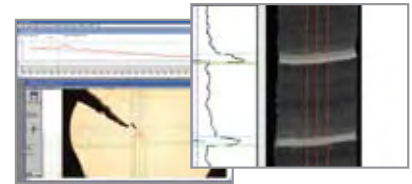
WinSCANOPY™
Canopy Structure and Solar Radiation



WinCELL™
Wood-Cell Structure Parameters over Annual Rings



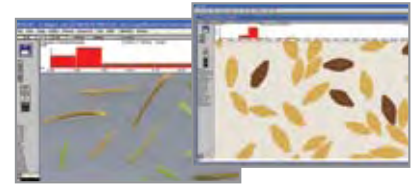
WinDENDRO™
Tree Rings and Wood Density Measurement



WinFOLIA™
Leaf Morphology, Healthy and Damage Areas



WinSEEDLE™
Seed and Needle Morphology, Count and Classification



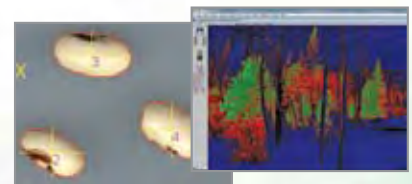
WinRHIZO™
Washed Root and Arabidopsis Seedling Morphology



WinRHIZO™ Tron
Morphology of Roots Growing in Soil



WinCAM NDVI™
Color Area Quantification, NDVI and Basic Morphology



Need More Than One Software Program?

Take Advantage of Our New Suites:



www.regentinstrument.com | sales@regentinstrument.com

Welcome to Wisconsin



Focal Flame Photography

Welcome to an area framed with pristine lakes and steeped in the land ethic culture. Come together for an unforgettable experience where majestic Wisconsin landscapes blend with a rich history of forestry and land stewardship to inspire generations of foresters. Welcome to Madison, Wisconsin, for the 2016 SAF National Convention.

Madison is central to a robust Midwestern forestry community that offers a rich history, a legacy of pioneering forestry environmentalism, and an active contemporary forestry industry. It is a vibrant, safe, walkable capital city that is home to the University of Wisconsin and the world-renowned USFS Forest Products Lab. Charming restaurants, cozy accommodations, and specialty shops complete the atmosphere of the city between the lakes.

It is also the home to the Frank Lloyd Wright-inspired Monona Terrace Community and Convention Center in the heart of downtown. Here the 2016 Convention will explore the history of forestry, land stewardship, and the connections that unite all who create, manage, use, and conserve forests and associated resources to meet desired goals, needs, and values.

This brochure touches on just some of the events, training sessions, networking opportunities and career-enriching experiences at this year's event. Visit www.safconvention.org for complete details and follow us on Twitter, LinkedIn, and Facebook for announcements.

Make your plans now to journey to the nation's best forestry event for sharing, networking, and discovery.

Sponsored by:



Register at www.safconvention.org before September 16 for Early-Bird Rates

www.safconvention.org

Our Transcontinental Land Ethic: Exploring Differences That Unite Us

Thursday, November 3

Plenary 1: Welcome to the Great Lakes

Forests form the fabric of the landscapes of Wisconsin and the broader Great Lakes area, influencing generations of foresters and figuring prominently in the cultures, traditions, and economies of the region. Our first plenary will reflect on the history, ecology, and management of these forests and will highlight the prominent role they continue to play in shaping and advancing SAF's mission.

Paul DeLong is Administrator of the Wisconsin Department of Natural Resources' Division of Forestry and Wisconsin's Chief State Forester. Paul is one of more than 450 permanent and many seasonal forestry employees who work in concert with countless internal and external partners to protect and sustainably manage Wisconsin's forests. Paul's service to the people of Wisconsin began in 1992. He has served as Chief State Forester since 2003. Prior to his career with the Wisconsin DNR, Paul worked as a mediator for the RESOLVE Center for Environmental Dispute Resolution, and subsequently as a senior program officer for World Wildlife Fund, both in Washington, D.C. Paul received a bachelor's degree in forestry from the University of Wisconsin - Stevens Point and a master's degree in natural resource policy from the University of Michigan.



Plenary 2: The Legacy

Looking into the past we can find a shared culture uniting us. We can see the similarities as well as the differences that we share in managing forested landscapes for diverse benefits, the profession, and SAF. The Legacy panel will explore the roots of forestry in North America, and some pioneers – Mira Lloyd Dock, Gifford Pinchot, Aldo Leopold – and their enduring impacts. Panelists will discuss what our land ethic means as we face the challenges of the 21st century, how it may be different from or similar to the past, and how exploring new perspectives and engaging cultural differences may strengthen our land ethic for the future.



Mark Kuhlberg is Professor of History at Laurentian University in Sudbury, Ontario, and is Director of its MA History program. His expertise is the history of Ontario's forests in particular and Canada's in general. He has published articles, for example, about the silvicultural initiatives undertaken by industry during the 1920s, the origins of the forestry school at the University of British Columbia, and the administration of timber on First Nations' reserves. Mark has sat or sits on the Local Citizens' Committee for the Sudbury Forest, the Ontario Professional Foresters' Association Council, the boards of both the Forest History Society (based in North Carolina) and the Forest History Society of Ontario, and is involved in the Inter-American Institute's project that is examining the use of bio-energy across the Americas. He is still waiting for his call up to the Toronto Maple Leafs, and in the meantime is biding his time coaching his kids' hockey teams and flooding the local outdoor rink.

Susan Rimby is the author of *Mira Lloyd Dock and the Progressive Era Conservation Movement* (The Pennsylvania State University Press, 2012). Dock was not only a preeminent conservationist, but the first woman in the world to sit on a public forest commission and the first woman in Pennsylvania to hold a political office. Susan learned about Dock while a Scholar-in-Residence at the Pennsylvania State Archives in 2001. Susan holds a Ph.D. in United States women and labor history from the University of Pittsburgh, an M.A. in History from Kutztown State College, and a B.S.Ed. in Social Studies Education from Bloomsburg University. In addition to teaching high school for six years, she held faculty positions at Millersville and Shippensburg Universities. She currently serves as the Founding Dean of the College of Liberal Arts and Education at Lock Haven University. Susan is a three-time Pennsylvania Humanities Council Commonwealth Speaker. She is currently active in Rotary International and the American Association of University Women.



Susan Flader is professor emerita of American western and environmental history at the University of Missouri-Columbia. A Wisconsin native, she has published several books on Aldo Leopold, among other works, and chaired the board of the Aldo Leopold Foundation. She has served as president of the American Society for Environmental History and is currently vice president of the L-A-D Foundation, which owns the 143,000-acre, sustainably managed Pioneer Forest and many natural areas in the Missouri Ozarks. She was a founder and president of the Missouri Parks Association and a leader in securing and renewing the state's Parks and Soils Sales Tax, which led to a renaissance of Missouri's state park system.



James Finley, Ph.D. is the Ibberson Chair of Forest Resources Management and Director of the Center for Private Forests at Penn State University. His research focuses on the human dimensions of natural resources. Published studies include investigations into private forest owner attitudes and motivations, the effects of owner decisions on forest retention, forest sustainability, and peer-to-peer learning. He is also the Pennsylvania extension forester and in this capacity he focuses on outreach to private forest owners and stakeholders. He is the founding co-chair for Penn State's Human Dimensions of Natural Resources and the Environment dual-title intercollege graduate degree program.





Plenary 3: The Land and the Future

Forest managers use their scientific knowledge of the land's productive potential for healthy plant and animal communities while working to understand and satisfy the needs and views of the owners and users of the land. The land ethic provides unifying clarity for speakers to frame varied views from across the landscape. Speakers will focus on future opportunities and challenges with our management and stewardship of forests and offer insights into new approaches and adjustments as a vibrant, relevant profession. The final speaker will explore how reaching out and welcoming new disciplines and perspectives into SAF and engaging cultural differences can provide innovative solutions to land management challenges.



Mike Dockry is a member of the Citizen Potawatomi Nation and was born and raised in Green Bay, Wisconsin. He is a Research Natural Resource Specialist (Forester and Social Scientist) with the USDA Forest Service's Northern Research Station in the Strategic Foresight Research Work Unit. Mike is part of a team of ecological and social scientists working on interdisciplinary research to support foresighted natural resource management decisions. His research interests include understanding social aspects of forest and natural resource management, sustainability, indigenous community forestry, strategic foresight research, and environmental history. Mike is involved in several projects supporting sustainable forest management and climate change adaptation with American Indian communities in the Great Lakes. From 2005 until August 2013, Mike was the USDA Forest Service's Liaison to the College of Menominee, where he facilitated sustainable forestry research, education, and technical assistance of interest to tribal communities. Mike earned his PhD in the Forest and Wildlife Ecology Department and a BS in Forest Science at the University of Wisconsin Madison and holds an MS in Natural Resources from the Pennsylvania State University. He has worked as an Environmental Planning Intern for the Oneida Tribe of Indians of Wisconsin, a Peace Corps Volunteer in Bolivia, and he was the Assistant Forest Planner for the Green Mountain and Finger Lakes National Forests. Mike enjoys camping, canoeing, speaks several languages, and has two children and a loving wife.



Jed Meunier is an ecologist and research scientist with the Wisconsin Department of Natural Resources studying forest and fire ecology. His dissertation research was on fire ecology in northern Mexico aimed at guiding forest management and restoration in northern Mexico and the U.S. southwest, very much in line with what Aldo Leopold had himself promoted seven decades prior. Jed received his M.S. in the Wildlife Ecology Department at the University of Wisconsin-Madison, a Department his great-grandfather started in 1933, where he studied the effects of hunting on declining American woodcock populations. Jed has not lacked sources for inspiration; his mentors and role models include his grandmother, Nina Leopold Bradley, and her siblings. Jed's life path, both personally and academically, is very much entwined with the mission and legacy of his family and the Aldo Leopold Foundation where he serves on the board of directors.



Enrich Your Skill Sets with These and Many Other Scientific and Technical Sessions

Agroforestry

- Impact of Managed Woodland Grazing on Forage Quantity, Quality, and Livestock Performance
- Overcoming History: Attitudes of Wisconsin Resource Professionals and Farmers Toward Silvopasture
- Cattle Grazing Impacts on Oak Savanna Restoration, Woodland Soil and Vegetation, and Tree Seedling Protection

Biomass, Carbon, & Bioenergy

- Southern Pines Growth, Yield, and Carbon Balance Integrated Model
- Greenhouse Gas Emissions of Wood Pellet Heat in the Northern Forest
- Evaluating Land Use Change and Associated Forest Carbon Dynamics in the Eastern United States

Boots on the Ground

- Influences of Wildlife and Environmental Stresses on Bottomland Hardwood Forest Restoration in East Texas
- Single Tree Selection Order of Removal in Northern Hardwood Forests
- Short-rotation Jack Pine Management Improves Both Net GHG Impact and Habitat for Endangered Kirtland's Warbler

Diversity in Natural Resources Research, Practice, and Education: Celebrating Achievements and Building Skills and Community

- Using the Science of Diversity and Inclusion to Support Women in Natural Resource Fields
- Supporting Women in Forestry Today (SWIFT): Small-Scale Discussions with Large-Scale Implications
- Inter-institutional Variation in Minority Enrollment in Undergraduate Natural Resource Programs in the U.S.
- Using Science to Inform Cultural Transformation: A Case Study from the USFS Northern Research Station

Economics

- Sawmill Employment in Tennessee: A Location Trend Analysis
- Using Timber Flow, Mill Capacity, and Utilization Data from TPO to Support National Forest Planning
- Using TPO and Other Data to Understand the Montana Forest Industry's Slow Recovery from the Great Recession



Education & Communication

- Assessing the Impacts of a Changing Natural Resource Program
- The LEAF Program: Enriching K-12 Education, Sustaining Forests
- Confessions of a Forestry Communications Award Winner

Entomology & Pathology

- Tree Decay and Implications for Tree Risk Assessment
- Outbreak Histories for Major Oak Defoliators in Virginia with Implications for Oak-dominated Forest
- Emerald Ash Borer Management: Viewing Through an Economic, Ecologic, and Social Lens

Fire & Fuels Management

- Examining Landscape Control of Fire Severity in the Central Appalachians
- Wildfire Impacts on California Spotted Owl Nesting Habitat in the Sierra Nevada
- Efficacy of Resource Objective Wildfires for Restoring Ponderosa Pine Ecosystems of Northern Arizona

Forest Policy

- Seasonal Timber Harvest Restrictions in Wisconsin: Geospatial Analysis
- Using Voluntary Approaches to Protect Imperiled Species on Private Forest Lands in Florida
- CFLRP and the Mediating Influence of Federal Contract Regulations on Benefit to Local Communities
- Climate Change Consideration in National Forest Planning: Challenges and Opportunities

Harvesting & Utilization

- Cross Laminated Timber: A New Use for Beetle Kill
- Functional Species Group Composition in a Logged-Over Dipterocarp Forest in Central Kalimantan-Indonesia
- Impacts of Best Management Practices on Logging Costs and Productivity in the Northeast U.S.A.

Inventory & Measurement

- Are Observed Trends in Hardwood Tree Grade Due to Forest Degradation or Data Collection Anomalies?
- Norms and Efficiencies in Subsampling Stems for Total Height Measurement
- Sampling Efficiency of Distance-Based Measures of Stand-Scale Spatial, Structural, and Species Heterogeneity

Register at www.safconvention.org before September 16 for Early-Bird Rates

Private Forestry/Family Forest Owners

- Landowner Support of Voluntary Projects to Restore Salmon Habitat in Oregon
- Assessing Differences Among Private Forest Owners: The Impact of "Legacy" Ownerships
- Evaluation of the National Woodland Owner Survey Estimators for Private Forest Area and Landowners

Recreation

- Understanding Nature-Based Recreation through the Eyes of Youth from Diverse Backgrounds
- Identifying New Recreation Opportunities for Conserved Areas in the Wildland-Urban Interface
- An Assessment of Hunters' Preference and Perceived Constraints in Lease Hunting

Remote Sensing Applications & Geospatial Technologies

- The Emerging Role of Enterprise GIS in State Forest Agencies
- Real-time Tracking in Logging: Effects of Canopy, Aspect, and PDOP on GPS Movement Data and Geofence Accuracy
- Assessment of the GIS Skills Needed of Recent Forestry Graduates

Silviculture & Forest Ecology

- Silvicultural Options for Increasing Resilience of Black Ash Wetlands to EAB in Wisconsin
- Northern Red Oak Regeneration: 25-year Results of Cutting and Prescribed Fire in Michigan Oak and Pine Stands
- Maintaining the Softwood Component in Yellow Birch-Conifer Stands of Eastern Canada: A Great Challenge
- Challenges and Opportunities for Maintaining Ponderosa Pine Forests in the Southwestern U.S.
- Managing Multi-Aged Longleaf Pine Forests: Overstory and Regeneration Response to Harvest Treatment
- Influences of Deer, Canopy Gaps and Recalcitrant Layer on Understory Plant Composition

The Future

- An Interactive Exploration of the Challenges of Forest Inventories in Alaska
- Embracing the Future While Honoring the Past: FIA's Digital Strategy
- Delivering Science vs Managing Research

The Land

- Consideration of Non-monetary and Monetary Valuation to Understand Human Dimensions of Ecosystem Services
- The Flambeau Experiment: Consequences of Restoring Old-growth Structure to Managed Forests
- Forest Adaptation in Action: Climate Change Adaptation Projects in Northern Forests

The Legacy

- Northern Conifer Research in the Northeast: Multiple Species and Multiple Values
- Development of the Selection System in Northern Hardwood Forests of the Lake States
- Fire Exclusion and the Demise of Shortleaf Pine: Lessons from Long-term Silvicultural Research

Urban & Community Forestry

- Regional Goals – Local Action
- The State of the Science Using Urban Trees for Stormwater Management
- Professionalization of Connecticut's Tree Wardens: 25 Years Later



Special Events Just for Students

The SAF convention provides an opportunity to make lifelong personal and professional ties. For those serious about a career in natural resource management, the 2016 SAF Convention is a superb platform to make great connections. SAF members recognize that students are the future of the profession and make convention activities available to students at a reduced rate. Attend plenary sessions, scientific and technical sessions, and social and networking events to meet prominent experts, network with those in the profession, and cultivate employment contacts to explore many interesting careers that may await.

Quiz Bowl

Wednesday, November 2 • 7:00 pm – 10:00 pm

An SAF convention favorite, this Jeopardy-style quiz game is designed to stimulate some friendly competition between forestry schools across the country by pitting them against one another in a head-to-head contest with questions on all disciplines of forestry.

National Student Congress

Thursday, November 3 • 1:00 pm – 3:00 pm

This is the official business meeting of SAF's student members. Student members discuss issues and concerns related to SAF and the profession.

Pursue a Job at the Career Fair

Friday, November 4 • 1:00 pm – 4:00 pm

With on-the-spot interviewing and hiring, candidates and employers go beyond resumes and cover letters to create win-win situations for employment.

Leading organizations from the private sector, academia, state and federal government, and more will be present to select from top candidates. See www.safconvention.org for a complete list of participants and follow us on social media for announcements.



**Need a print registration form? Visit
www.safconvention.org for a PDF.**

See It During a Technical Tour

Tours that are undersubscribed may be cancelled. Go/no-go decisions will be made on September 5. If you have purchased a ticket for a tour that is cancelled, you will be contacted during the week of September 7. All tours include box lunch and water.

November weather in Wisconsin can range from snowy to warm and sunny. Participants should bring appropriate clothing and footwear and a water bottle.



Tuesday, November 1 & Wednesday, November 2

Menominee Tribal Enterprises (T1)

8:30 am November 1 – 5:00 pm November 2 • \$300

[Includes transportation, lodging, 2 lunches, 1 breakfast, 1 bottled water, and snacks each day.

Overnight accommodations at the smoke-free hotel at Menominee Casino Resort in Keshena, WI. Dinner Tuesday night on your own.]

Since 1854, Menominee Tribal Enterprises (MTE) has demonstrated its expert ability to manage, harvest, and process timber from the world renowned Menominee Forest – an award-winning forest located on the Menominee Nation Reservation in central Wisconsin. Sustainable forestry has been practiced on the Reservation since 1865, resulting in a forest that is ecologically viable, economically feasible, and socially desirable. One of the first forests to be certified as well-managed under Forest Stewardship Council standards, the nearly 250,000 acres represents what many consider to be the most successful example of temperate forest management in the US. On this two-day tour see examples of northern hardwood management and even-aged pine management, as well as “old growth” stands hardly distinguishable from those seen in typical photos from the 19th century. Learn about the Menominee adaptive management approach taking into account expected climatic change and the influence of existing and potential insects and pathogens and the many ways MTE tailors excellence in the management of its forest and the manufacturing of lumber and forest products for the general well-being of the tribal community, employees, customers, and future generations.

Wednesday, November 2

Urban Forestry (T2)

7:30 am – 4:00 pm • \$85

[Includes transportation, lunch, one bottled water, and snacks.]

This tour will highlight the coordinated efforts between the City of Madison, Dane County, State of Wisconsin, and USDA Forest Service to showcase how an urban forest is managed from street level to the national level. FIA data are merged with Madison's urban forest inventory to summarize the positive environmental impacts of urban trees. Madison has formed relationships with government entities and private industry to utilize urban wood for energy, recreation, and unique wood products. Visit places where ash trees culled due to emerald ash borer are used as structural columns or have been milled specifically for other purposes; participate in conducting an Urban FIA field plot measurement; tour a sawmill that focuses on using urban waste wood for high-end products; and see how urban wood waste is processed at the Dane County landfill.



Wednesday, November 2

Aldo Leopold Shack and Farm: Inspiring a Land Ethic (T3)

8:30 am – 4:30 pm • \$85

[Includes transportation, lunch, one bottled water and snacks.]

This tour weaves together Aldo Leopold's personal history, his famous shack, the landscape of *A Sand County Almanac*, and the Aldo Leopold Foundation's local, regional, and international work in advancing Leopold's land ethic. Participants will rekindle their own passion for the land, gain insights into Leopold's own ethical journey, enhance their understanding of LEED certification for energy efficient buildings, and see how the Foundation is practicing the land ethic through conservation planning, adaptive management, restoration, invasive species control, and prescribed burning on federal, state, and private lands through collaborative conservation. Visit the Leopold Legacy Center, featuring earth tubes, a thermal flux zone, pulling vs. forcing air, natural lighting, and geothermal heating and cooling, as well as the Leopold-Pine Island Important Bird Area where at-risk birds are being used as indicators of progress toward planned ecosystem conditions.





Wednesday, November 2

USDA Forest Service Forest Products Laboratory (T4 & T5)

8:30 am – 11:00 am • \$65

1:30 pm – 4:00 pm • \$65

[Includes transportation.]

The research and development of a variety of forest products have contributed to greater productivity and conservation of our nation's forests. Tour the world-renowned forest products research facility. The Forest Products Lab provides scientific research on wood and wood products and their commercial uses. From plywood to the newest nanotechnology, the FPL and its partners have changed how we build, package, and recycle forest products. On this half-day tour, visit the research, product development, and structural design and testing areas of the lab and gain a greater understanding of the science behind wood fiber utilization and structural design.



Sunday, November 6

Agroforestry in Wisconsin: Trees Working for Sustainable Agriculture (T6)

7:00 am – 5:00 pm • \$85

[Includes transportation, lunch, one bottled water and snacks.]

Increase your understanding of the science and practice of agroforestry in the temperate regions of the US. Learn how three Wisconsin landowners are integrating trees and forests with their crops and livestock to support agricultural production and conservation objectives. Visit examples of widely recognized, successful, temperate agroforestry practices in North America - forest farming, alley cropping, windbreaks/shelterbelts, and silvopasture – as well as oak savannah restoration and managed grazing. Agricultural products on these farms include shiitake mushrooms, maple syrup, goldenseal, hazelnuts, chestnuts, livestock, and timber.



Sunday, November 6

The Driftless Area of Wisconsin: Sustainable Forestry and Conservation Action in a Fragile, Privately Owned Landscape (T7)

7:30 am – 4:30 pm • \$85

[Includes transportation, lunch, one bottled water, and snacks.]

The Driftless Area of Wisconsin is a unique and fragile landscape that has been a proving ground for conservation change for decades. How do conservation and sustainable forest management get applied in a landscape that is primarily privately owned? How do foresters and conservationists effectively serve a multitude of landowners while addressing the ecological needs of the landscape? Beginning with the Coon Valley Watershed Demonstration Project in the 1930s through more recent social marketing via the Driftless Forest Network's My Wisconsin Woods, this visually unique area of Wisconsin remains vital in our understanding of the relationship between people and land. Explore the unique landscape, complex issues, and attempts to strengthen landowner responsibility for land health, past and present. Visit the country's first watershed project and active management sites, while discussing private land conservation and forestry with the Driftless Forest Network's My Wisconsin Woods partners.

Sunday, November 6

Wisconsin Cottonville Fire and Fire Equipment (T8)

7:30 am – 4:00 pm • \$85

[Includes transportation, lunch, one bottled water, and snacks.]

The Cottonville Fire, one of the largest in recent Wisconsin history, burned more than 3000 acres in Adams County. Learn about the fire, salvage operations, and reforestation efforts. Discuss firewise activities in the county and how its changing landscape influences those efforts. The tour will also highlight a static display and demonstration of WI-DNR Forestry fire equipment ranging from Type-4 engines to Type-6, -7, and -8 engines uniquely configured for Wisconsin fire fighting and a lowground, marsh rig unit.



Enhance Your Skills at Professional Development Workshops

Workshops are included as part of conference registration. No pre-registration required.

American Tree Farm System Inspecting Forester Training Workshop

Since 1941, the American Tree Farm System® (ATFS), has educated and recognized the commitment of US family forest owners to protect wildlife habitat and watersheds, to conserve soil, and to provide recreation for their communities while producing wood. Appropriate primarily for small landowners, the ATFS Standards of Sustainability requires that landowners develop a management plan based on strict environmental standards and implement the plan in a manner to protect the future productivity of the forest. Inspecting foresters provide the on-the-ground assurance that is essential for the integrity of the program by assessing that the standards are being met and recommending certification as appropriate.

Nonformal Environmental Education Programs: Guidelines for Excellence Workshop

Through the National Project for Excellence in Environmental Education, the North American Association for Environmental Education (NAAEE) is taking the lead in establishing guidelines for the development of balanced, scientifically accurate, and comprehensive environmental education programs and materials. Quality environmental education programs help develop an environmentally literate citizenry that can compete in our global economy; has the skills, knowledge, and inclinations to make well-informed choices; and exercises the rights and responsibilities of members of a community. This workshop will introduce participants to the NAAEE "Nonformal Environmental Education Programs - Guidelines for Excellence," which offers a set of recommendations for developing and administering high-quality, nonformal (non-classroom) environmental education. Participants will each receive a copy of the guidelines.

Leader Lab for New Supervisors: What They Didn't Teach You about Leadership in Forestry School

The transition from technical expert to frontline supervisor is the most important and challenging leadership transition anyone will make in their career, yet it attracts the least amount of attention, training or mentoring in most organizations. As a result, 40 percent of newly appointed leaders fail or fall short of needed results within their first 18 months. You can't afford this, and you don't have to. This session will give participants a fast start for rookies and an invigorating refresher for more experienced supervisors in the forestry community. Led by a professional trainer, speaker and leadership coach who ascended from field forester to vice president of human resources in the forest products industry, participants will get (1) 30 Lessons in Leadership from the School of Hard Knots, (2) the opportunity for a hot seat coaching session in front of the room, and (3) practical advice they can use immediately from audience questions that will help all participants hit the ground running as a supervisor and not just hit the ground!



Taking Your Career to the Next Level with Credentialing

What is the value of SAF Certification? Who benefits from it? If you have ever considered becoming a Certified Forester® or just want to learn more, attend this special session. Gain confidence to achieve certification with colleague support and tools to help you prepare for advancing your career. Learn how to make the most of the credential to market your skills and business. Ask the questions from those who have experienced the process and how they use certification to bolster their credibility.

Challenging Interactions in Professional Settings: Increasing Cultural Competence

Participants will learn new terminology around diversity and inclusion challenges. They will cultivate skills to engage challenging interactions in their professional settings, while building community within the group/organization.

Participants will develop a safe environment by exploring preferences without using the term "diversity" and witness how assumptions leads to separation, miscommunication, and misunderstanding. Then we will use diversity in problem-solving and discuss how diversity integrates into professional or academic settings.

We will learn about the "Dominant Excluded Model" to help participants understand value systems and social/cultural norms that marginalize communities.

Jumpstart Your Research Career with SAF's Journals

Join SAF's journals editorial team to learn about how SAF's journals can help early-career researchers springboard their careers. This session will cover commonly encountered ethics pitfalls that young scholars should be aware of, and will touch on best practices for promoting your science (great for newbies and seasoned authors alike). Also learn some pro tips for how to design a powerful research question, and discuss the value of giving back to the scientific research community by volunteering to serve as a peer reviewer.

Meet Editors in Chief Don Bragg (*Journal of Forestry*), Keith Moser (*Forest Science*), Senior Managing Editor Jennifer Kuhn, Manuscript Manager Linda Edelman and special guest SAF's Senior Research Fellow Rich Guldin in-person for this session.

Policy and Popcorn Sessions

These sessions encourage dynamic discussions among leaders in the profession about current issues and opportunities. Participants can become active participants in the ongoing dialogue in the sessions and in their communities.

State Forest Action Plans: Lessons Learned and the Work That Remains

Moderated by US Forest Service Director of Cooperative Forestry Steven Koehn, this panel will examine the history of state forest action plans, compare them to those created by state wildlife counterparts, discuss how important action plans can be in conveying the many benefits of forests and forestry to tax payers, and explore how industry and federal agency partners can also benefit.

Forestry and Species at Risk: How Do We Better Position Forests and Forestry Professionals to Contribute to Successful Habitat Outcomes?

Featuring representatives from the wildlife community, academia, and forestry interests, this panel will discuss how to highlight the role of forests in positive outcomes and project how management practices may be adapted to include positive outcomes for wildlife in the planning process.

How Do We Attract Native Populations to the Natural Resources Professions?

Engaging tribal youths to explore career opportunities in natural resources presents a opportunity to the profession. Are natural resource professionals doing all they can to attract this group and are the methods employed the most effective means of relating to these young people deciding what may be next? If the recruiting efforts are paying dividends can these programs be expanded to other target audiences?

How Can I Advocate for My Profession?

SAF Government Affairs and External Relations Team and SAF leaders will discuss the priority issues being pursued by the the national office and provide insight and advice on how individuals can engage and build connections with policy makers and leaders at all levels. This panel will discuss how to effectively engage decision makers to show them the many benefits of forests.

Moving Conversation to Action: How Do We Increase the Pace and Scale of Work Done on Federal Lands?

Forests support clean water, clean air, wildlife habitat, and economic opportunities in communities across the nation. As these communities work with the federal agencies on large landscape restoration projects, diverse opinions about administrative, Congressional, and some procedural actions must be balanced. This panel, including representatives from a state forestry agency, the conservation community, industry, and academia will investigate what has worked, what shows the most potential, and what needs to be addressed to green light necessary forest management activities to improve the health of federal forests now and into the future.

Reconnect with Colleagues at these Special Events



Fellows' Breakfast (E1)

Thursday, November 3 • 6:30 am – 7:30 am

\$40

SAF Fellows reunite for this annual Breakfast to recognize the contributions of Fellows who have served throughout the years as well as welcome those who have newly joined the ranks. This breakfast is for Fellows and their spouses/companions only.

SAF Town Hall

Thursday, November 3 • 3:30 pm – 5:00 pm

FREE

Part SAF business meeting, part open discussion, the SAF Town Hall gives SAF members an opportunity to hear from and engage the SAF leadership in discussions about the challenges and opportunities facing the profession.

Diversity Reception (E2)

Thursday, November 3 • 5:30 pm – 6:30 pm

\$40

SAF is pleased to recognize the strength and importance of all perspectives in SAF and the forestry profession at home and abroad with the Diversity Reception. This reception will celebrate all aspects of diversity and global awareness in forestry and SAF by attracting students, Peace Corps alumni, and forestry professionals who have worked across the world to gather and discuss their experiences and observations.

This exciting event will set the stage for all to become engaged in understanding and showcasing the value and beauty of diversity in SAF and the forestry profession.



Sponsored by:

Alumni Socials and Receptions

Thursday, November 3 • 6:30 pm – 8:30 pm

Reconnect with fellow alumni — sharing old, new, and treasured memories. Alumni socials are perfect for networking for students. Each alumni reception will be listed in the on-site printed program. If you decide to host an alumni event separate from the Thursday night reception or at an off-site location, SAF will include the information in the on-site program as long as it is provided.

There is limited space available on a first-come, first-served basis. We have reserved space at the Monona Terrace and Madison Concourse Hotel. Space is on hold until September 14, 2016. Please make your plans early!

Go to www.safconvention.org and click on Events then Alumni Receptions to download a space request form. You also may call Caitlin Gabarow at (802) 865-5202 or e-mail caitlin@delaneymeetingevent.com

Awards Celebration (E3)

Friday, November 4 • 6:30 pm – 8:30 pm

Free

Join the celebration as we honor the 2016 National Award Winners. This free event will feature a flavor of Wisconsin with music and light refreshments. We will also congratulate winners of the Field Forester Awards, Gregory Award, and the incoming class of Fellows. Additionally, we will honor Gifford Pinchot with an induction into the World Forestry Center Hall of Fame.

Breakfast with the Leaders (E4)

Saturday, November 5 • 6:30 am – 7:45 am

\$40

Join leaders from US land management agencies for an engaging morning breakfast discussion. The conversation will cover a variety of issues and opportunities they identify for the forests and grasslands in North America. They will introduce agency priorities for the coming year and entertain a few questions from the audience.



Bring Your Spouse or Companion for a Sample of the Badger State

The Companion registration is for persons who are not eligible for SAF membership.

Companion registration includes the Welcome Reception, entry to the Exhibit Hall and programs, and the Friday Awards Celebration.

Tours that are undersubscribed may be cancelled. Go/no-go decisions will be made September 5. If you have purchased a ticket for a tour that is cancelled, you will be contacted during the week of September 7. All tours depart from and return to the Monona Terrace Convention Center.



Wednesday, November 2

Wine and Cheese Tour (C1)

8:30 am – 3:30 pm • \$85

[Includes transportation and lunch.]

No trip to Wisconsin is complete without sampling some of the cheese that the state is known for! We'll visit the 125 year-old family-owned Cedar Grove Cheese factory. Attendees will get to see how the factory's award-winning artisan cheeses are made. From there we will drive through the scenic "driftless area" of farms and forested hills to the Wollersheim Winery location in the restored stone buildings of the original winery dating back to the 1840s. Guests will learn about the wine-making process, and sample some of the vintages before enjoying a late lunch at the winery.

Pre-Order Your Convention T-Shirt

Attend Convention in style with the special 2016 commemorative t-shirt. Pre-order your shirt as part of your registration at www.safconvention.org

Just \$18

Available for pickup onsite at the SAF Store during Convention.



International Crane Foundation

Thursday, November 3

Leopold Shack and International Crane Foundation (C2)

8:00 am – 4:30 pm • \$85

[Includes transportation and a box lunch.]

Visit the Aldo Leopold National Historical Landmark (Leopold's Shack), an attraction that receives thousands of visitors each year. Take in the land that Leopold and his family restored to health as they aspired to a greater land ethic. The family's history comes alive with historic photos, family stories, and landscape history. Afterwards, we will take a guided tour at the International Crane Foundation, the only place in the world where whooping cranes are exhibited in a natural setting. The whooping crane is America's tallest bird, as well as a leading symbol of conservation. Learn more about this and 14 other species of cranes as you tour the Foundation.



Horicon Marsh (C3)

9:00 am – 3:00 pm • \$85

[Includes transportation and a box lunch. Dress for the weather, with good walking shoes.]

Guests will visit Horicon Marsh, the largest freshwater cattail marsh in the United States at 33,000 acres. The land is divided between the U.S. Fish and Wildlife Service and the Wisconsin Department of Natural Resources, and is the home of 304 different species of birds. This tour will stop at the WI-DNR Horicon Marsh Nature Center / Explorium, and includes a boardwalk hike into the marsh.

Friday, November 4

New Glarus Brewery and Town of New Glarus (C4)

9:00 am – 3:00 pm • \$65

[Includes transportation. Lunch will be on your own. Make sure to dress for the weather.]

Join us to visit the New Glarus Brewery, a modern facility in an old-world setting. Guests will be able to take a self-guided tour of the brewery, which will be followed by the opportunity to sample the beers produced on property. Afterwards, attendees will have free time for lunch and shopping in the town of New Glarus, called "The Little Switzerland of Wisconsin" for its strong Swiss heritage.



Discover Resources and Technology at the Forest Management Expo

Enhance your work with innovation and efficiency by visiting the Forest Management Expo. Learn about the latest products, technologies, and resources that can help you in the field or in the office. Companies and organizations ranging from the private and public sectors, as well as educators and government agencies, will share information about the latest techniques, tools, research, and instruments being used in forest management. The Expo is the perfect atmosphere for networking

with colleagues and peers in addition to showcasing the latest in forestry. See www.safconvention.org for a complete list of participants.

Here are some of our current exhibitors:

- Aervoe
- Albuquerque Convention & Visitors Bureau
- American Forest Management
- American Forests
- American Tree Farm
- Ben Meadows
- BioForest

- Bruce Cunningham
- Bureau of Land Management
- Cal Poly
- Colorado State Forest Service
- Davey Tree
- Diamond Mowers
- Domtar
- Environmental Consultants
- ESRI
- Expera Specialty Solutions
- F4Tech
- Finite Carbon
- Forest History Society
- Forest Metrix
- Forest Stewardship Council
- Forestry Suppliers
- Gravely
- Haglof
- Intertribal Timber Council
- Juniper Systems
- Laser Technologies
- Leading Edge Geomatics
- Lim Geomatics
- Mason, Bruce & Girard Inc.
- Michigan Technological University
- Midwest Hardwood Corporation
- Mississippi State University
- National Association of State Foresters
- National Wild Turkey Federation
- NCP Coatings
- Nelson Paint
- NFPA/Firewise
- North Point GIS
- Northern Arizona University
- Northern Institute of Applied Climate Science
- Oregon State University
- Ponsse
- Purdue University
- Insight Robotics
- Regent Instruments
- SCS Global Services
- Signature Credit Union
- SilviaTerra
- Spectrum Technologies
- Sustainable Forestry Initiative
- Steigerwaldt
- Tomahawk Live Trap
- University of Arkansas
- University of Idaho
- University of Maine
- University of Missouri
- University of Washington
- University of Wisconsin - Stevens Point
- Utah State University
- Virginia Tech
- Voss Signs
- Waveland Press



Interested in sponsoring or exhibiting?

Contact Christopher Whited at (866) 897-8720, ext. 110 or whitedc@safnet.org

Take Advantage of SAF Member Discounts

SAF members benefit from discounts on airlines, rental cars, and more at the ATC Travel Center. Make the most of your journey with travel tools, low-fare search options, reservations, and suggestions for exciting adventures. Visit: www.atcmeetings.com/saf to make your plans.

Experience the Monona Terrace Community and Convention Center — originally designed by Wisconsin native Frank Lloyd Wright. Situated on the northern shore of Lake Monona and framed by Madison's charming downtown, Monona Terrace will be the hub of all Convention activities.

Rest Your Head

After a full day of conversation, growth, and exploration, set your mind at ease with one of these four cozy locations to relax for the night:

The **Hilton Madison Monona Terrace**, in the heart of Madison, overlooks Lake Monona. This splendid hotel is connected via a climate-controlled skywalk to the Monona Terrace Community and Convention Center. Relax in elegantly comfortable rooms and take advantage of terrific dining, leisure, and event options. **Rooms start at \$176.**

The **Madison Concourse Hotel** is just steps from the heart of Madison, near the State Capitol, lakes, University of Wisconsin, and Monona Terrace Convention Center. This award-winning facility features historic grandeur paired with superior service. **Rooms start at \$156.**

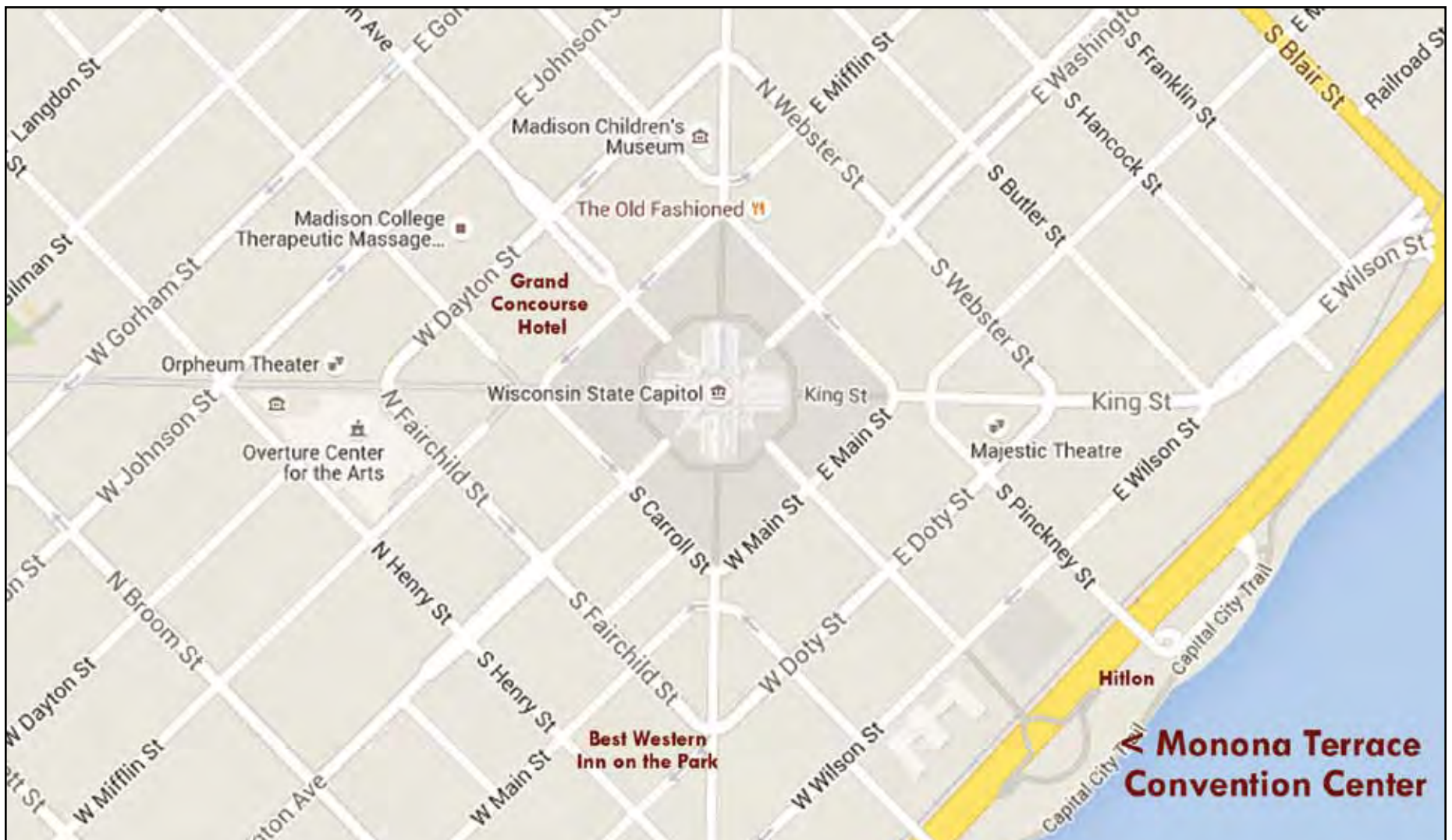
The **Best Western Plus Inn on the Park** offers an array of modern hotel features while staying in the heart of Madison. Located on Capitol Square, this Madison landmark features moderately priced accommodations combined with convenience and charm. **Rooms start at \$144.**

The **Sheraton Madison** sits on the western shore of Lake Monona and at the edge of Turville Point Conservation Park. With a direct connection to the Monona Terrace via the Capital City Trail, the Sheraton provides access and comforts to make your stay memorable. **Rooms start at \$119.**

Visit www.safconvention.org then click on **Travel & Lodging** to reserve your room.



Hilton Inn with Skywalk to Monona Terrace Convention Center



Schedule at a Glance

NOTE: This information is subject to change.

Tuesday, November 1

Noon – 7:00 pm Attendee Registration
 Noon – 7:00 pm Exhibitor Registration
 3:00pm – 7:00 pm Exhibitor Move-In

Wednesday, November 2

8:00 am – 7:00 pm Attendee and Exhibitor Registration Open
 8:00 am – 4:00 pm Exhibitor Move-In Continues
 4:00 pm – 5:00 pm Student Orientation and Reception
 5:00 pm – 7:30 pm Welcome Reception: Exhibit Hall
 7:00 pm – 10:00 pm Quiz Bowl

Thursday, November 3

6:30 am – 7:30 am Fellows' Breakfast
 8:00 am – 10:00 am Opening Ceremonies, Welcome, Plenary 1
 9:30 am – 10:30 am Break in Exhibit Hall
 9:30 am – 5:30 pm Exhibit Hall Open
 10:30 am – Noon Plenary 2
 Noon – 1:30 pm Lunch in Exhibit Hall with Poster Symposia
 Noon – 4:00 pm Technology Demonstrations
 1:30 pm – 3:30 pm Plenary 3
 3:30 pm – 5:00 pm Refreshments in Exhibit Hall
 3:30 am – 5:00 pm SAF Town Hall
 5:30 pm – 6:30 pm Diversity Reception
 6:30 pm – 8:30 pm Alumni Receptions

Friday, November 4

8:00 am – 9:30 am Scientific and Technical Sessions
 8:00 am – 5:00 pm Professional Development Workshops
 9:30 am – 4:00 pm Exhibits Open
 9:30 am – 10:00 am Break in Exhibit Hall
 10:00 am – 4:00 pm Technology Demonstrations
 10:00 am – Noon Scientific and Technical Sessions
 Noon – 1:30 pm Lunch in Exhibit Hall with Poster Symposia
 1:00 pm – 3:00 pm National Student Congress
 1:00 pm – 4:00 pm Career Fair
 1:30 pm – 3:00 pm Scientific and Technical Sessions
 3:00 pm – 4:00 pm Break in Exhibit Hall
 4:00 pm – 5:30 pm Scientific and Technical Sessions
 4:00 pm – 11:00 pm Exhibit Hall Tear-Down
 5:30 pm – 6:30 pm Working Group MeetUps
 6:30 pm – 8:30 pm Awards Celebration

Saturday, November 5

6:30 am – 7:45 am Breakfast with the Leaders
 8:00 am – 5:00 pm Professional Development Workshops
 8:00 am – 9:30 am Scientific and Technical Sessions
 9:30 am – 10:00 am Break
 10:00 am – Noon Scientific and Technical Sessions
 Noon – 1:00 pm Lunch
 1:00 pm – 2:30 pm Scientific and Technical Sessions
 2:30 pm – 3:00 pm Break
 3:00 pm – 4:30 pm Scientific and Technical Sessions

Sunday, November 6

7:00 am – 5:00 pm Technical Tours



**Register online at
www.safconvention.org
 to download a PDF
 registration form.**

Registration Pricing

	Before & On September 16	After September 16
SAF Member (Platinum, Gold, or Transition)	\$455	\$565
SAF Member (Silver)	\$500	\$610
SAF Member (Golden Member/50+ years)	\$425	\$515
Nonmember (includes one year of SAF membership)	\$620	\$730
Companion	\$80	\$95
One-Day Rate	\$250	\$285
One-day rate includes the sessions held that day, Poster Symposium, Exhibit Hall, and breaks		
Student SAF Member	\$160	\$200
Student Nonmember (includes one year of SAF membership)	\$210	\$250



Esri Forestry Group

Become a Member

Build Your Community

Connect with foresters and land managers who are passionate about geographic information system (GIS). Join the Esri Forestry Group (EFG) and become part of a thriving network of knowledgeable forest GIS professionals and technology experts.

Advantages of EFG Membership

- **Knowledge:** Learn from forest webinars, workshops, and conferences. Earn Continuing Forestry Education (CFE) credits.
- **Information:** Receive Esri news and get a free subscription to the *Esri News for Forestry* newsletter.
- **Solutions:** Discover more ways to put your organization's GIS, forestry, and land data to work.
- **Events:** Get a discounted rate for the annual Esri Forestry GIS Conference.

EFG membership is free. To learn more, become a member, or renew your membership, visit esri.com/EFG.

