

# The Allegheny News



Allegheny Society of American Foresters  
**Summer 2010**



**Professional Management  
Services including:**

**Understory Vegetation Control**

**Invasive Plant Control**

**Deer Exclosure Fences**



**Barry S. Rose, Certified Forester**

*"Committed to Sustainable Forestry"*

**P.O. Box 1260, Gouldsboro, PA 18424-1260**

**Office Phone: (570) 843-5052 ♦ Email: frs.inc@pa.net**

**[www.ForestRegeneration.com](http://www.ForestRegeneration.com)**



# The Allegheny News

Volume 19, No. 2

The Allegheny News is the official publication of the Allegheny Society of American Foresters, published four times annually.

**Deadline for articles and photos is March 15, June 15, September 15, and December 15.** Subscription rate is included in the annual Allegheny Society dues.

*The mission of the SAF is to advance the science, technology, education, and practice of professional forestry in America, and to use the knowledge and skills of the profession to benefit society.*

**The Allegheny News**  
**PO Box 699 · Dillsburg, PA 17019-0699**

[www.alleghenysaf.org](http://www.alleghenysaf.org)

Editor Jack Winieski (ansaf@verizon.net)

Layout by Catherine Winieski Carter (catha63@epix.net)

## Table of Contents

Chair's Corner .....	1-2
In Memoriam: Anson E. Wright .....	2
Spring MD/DE Division Meeting .....	3
District VII Council Report .....	4-5
Foresters from India Study in PA .....	6
ANSAF Executive Committee Minutes .....	7-9
Allegheny SAF Summer Meeting .....	10
Summer Meeting Photo Highlights .....	11-14
Timbers Benefitting Trout .....	15
Steve Koehn Receives Arbor Day Award .....	15
Birds & Habitat Research at Forestry Forum .....	16
Roach-Bauer 25th Anniversary DVD .....	17
An Invitation to Clarion, PA .....	18
Emerald Ash Borer Tour Planned .....	19
Coming Events .....	20
Allegheny SAF Committee Chairs .....	20
Allegheny SAF Chairs, Executive Committee and Division Chairs .....	Inside Back Cover

## Cover Story

Populations of forest interior bird species, such as this Wood Thrush, are declining due to several factors. Research about the possible reasons for the decline was presented at the April 2010 Roach Bauer Forestry Forum. See the article on page 16 for more information. (USFWS photograph)

## Chair's Corner

By Mary Ann Fajvan, Allegheny SAF Chair



Happy summer! As we all get extremely busy with field work please remember to check the SAF website for news of the 2010 SAF National Convention. Registration opened June 1, for the convention being held October 27-31 in Albuquerque, NM. Please check the SAF website for details: [www.safnet.org](http://www.safnet.org).

I hope some of you will be able to attend this year because the program committee has organized a great program focused on a watershed theme. There are also a wide variety of presentations associated with the technical sessions, where you can pick and chose to attend presentations based on your interests. Don't forget to consider the three special workshops also being offered because you need to pre-register for these events. One of the workshops: "Adding Value to North American Forests" is being hosted by the Silviculture Working group of the North American Forest Commission. I am the chair of this workshop so if you have any questions please contact me.

If you cannot attend the convention, please go take advantage of the local and regional

(continued on page 2)



(continued from page 1)

meetings and workshops being offered closer to home. Updates are posted online at our Allegheny SAF website: [www.alleghenysaf.org](http://www.alleghenysaf.org).

Attendance at meetings and conferences provides educational and professional opportunities to help you keep updated on scientific and technical information. Sometimes the best part about these meetings and conferences is getting together with old and new acquaintances and learning from each other. For me, SAF has become an extended "family" with friends colleagues spread across the country.

I recently attended a meeting of the North American Forest Commission in Guadalajara, MX. As part of the meeting, we went on a field trip to visit the activities associated with community forestry programs. These programs allow small villages to share in the forest management of a tract of land and directly profit from the sales of all forest products. Pilot projects are being implemented to establish value added business opportunities such as sawmills, woodcrafts and furniture making. They are also struggling with management issues associated with markets for low-value tree species and regeneration of high value species because most of the easily accessible forests have been highgraded in the past. I found that many of the issues these community forests are struggling with are similar to those in some of our rural communities; our major fiber source. I expect that these are the types of issues that will be the focus of some of our discussions at the Workshop in Albuquerque. I hope to see you there! 🌿

<http://www.alleghenysaf.org>

## In Memoriam

**Anson E. (Andy) Wright**, age 74, of Union City, died Wednesday, January 20, 2010 at Hamot Medical Center. He was born in Waverly, NY. Andy earned his undergraduate degree from Penn State University, then went on to earn his Masters Degree from Yale University. He received active duty training and served as a Captain in the United States Army Reserves. Andy was a well known Forester throughout the New York and Pennsylvania regions and was recognized as an expert in the field.

Andy was a 50-year "Golden" member of the Society of American Foresters. He was a proud member of the Penn State Alumni Association and a dedicated Nittany Lions football fan. In his later years he spent many days enjoying walking and hunting at his son's hunting camp located in Bear Lake, PA and participating in his grandchildren's sporting events. He pursued many hobbies during his life, but especially loved buying and selling cars and spending time in the forest lands of Pennsylvania.

Andy is survived by his wife of 37 years D. Elaine Wright; five children: Joy Wright MacDade and husband Dennis of San Diego, California; John Wright and wife Anneliese of Stafford, Virginia; Anson Wright Jr. and wife Lori of Syracuse, New York; Kimberly Platz and husband David of Erie, Pennsylvania; and Nicole Burgess of Sacramento, California. He is also survived by his seven grandchildren: Kayla, Bradley, Danny and Patrick Wright; and Brittany, Ryan and Kirsten Platz. Memorials may be made to the Lake Erie Arboretum at Frontier Park (LEAF) Organization, 1650 Norcross Road, Erie, PA 16510. 🌿





# Spring 2010 MD\DE Division Meeting

By Walter Buck, MD/DE Communications Chair

The Maryland and Delaware SAF spring meeting took place April 28, 2010 at Oregon Ridge Park Lodge, Cockeysville Maryland. The cold sunny morning saw 50 members and guests in attendance. This year's theme for the meeting was Forestry at the Local Level. Speakers from across Maryland gave a variety of presentations on the subject, which included a field visit to a recent harvest operation on Oregon Ridge Park.

**Steve Koehn**, State Forester for the Maryland Forest Service, gave a detailed report on the 2010 Maryland State Forest Assessment and Strategies Program. Steve presented findings and described how the assessment provides analysis of forest conditions and trends for both rural and urban forests. Long-term resource strategies were also discussed for investing state and federal resources.

**Clark Howells**, Assistant Manager Reservoir Natural Resources from the Baltimore City Department of Public Works, presented findings from the on-going Baltimore City Reservoir Forest Study. As part of this study, **Anne Hairston-Strang**, from the Maryland Forest Service, discussed plans for a forest thinning study at Liberty and Pretty Boy Reservoirs this summer. The study will include deer exclosures, looking at forest regeneration and invasive species management

**Don Outen**, Natural Resource Manager for Baltimore County, discussed the County's Forest Sustainability Program. This program has become nationally recognized for its success in assessing forest health and implementing best -management practices to ensure sustainable, healthy and working forests.



The highlight of the afternoon was the visit to the forest on the Oregon Ridge County Park. Baltimore County had contracted with **Len Wrabel**, of Mar-Len Environmental Services, to develop a Management Plan for the forest. No management had been practiced on the 900 acre forest since the 1880's. Len finished a detailed assessment and management plan in April 2007. He found an oak dominated forest, 100 plus years in age that is over -stocked with low species diversity, inadequate regeneration and suffers the effects of high deer populations. Len's recommendations included a selective forest thinning, on most of the forest, to reduce overcrowding, stimulate regeneration and increase species diversity. Len Wrabel and **Scott Kurtzman**, forester for Glatfelter Pulpwood Company led the group to a 20-acre stand, which experienced a severe Gypsy Moth infestation and defoliation in 2006. This mature, over-stocked stand of chestnut oak suffered dieback and had no oak regeneration present in the understory. On Len's recommendation, a salvage harvest was conducted in July 2008, by Glatfelter Pulp Wood Company.

In the fall of 2009 the site was planted with oaks of various species, hickories, and a few American chestnut. Planted seedlings were protected from deer browse with Ventex plastic shelters. Custom deer fence shelters, 6 feet in height, were used to protect saplings. Management plans call for continued control of invasive species by mechanical removal and herbicide applications. Thanks to good forest management this stand appears well on its way to becoming a successfully regenerated and sustainable forest. 🌱





## District VII Council Report

By Kenneth Jolly, CF, SAF District VII Representative

As you may recall, the first Council meeting of 2010 was scheduled for February 6 and 7 at the SAF Headquarters Office in Bethesda, but was cancelled due to the 20+ inches of snow that fell that weekend. As a result, Council conducted three conference calls during the first five months of the year to accomplish interim business, and the first face-to-face Council Meeting of 2010 was held on June 12 and 13 in Coeur d'Alene, Idaho. The following are highlights from the Agenda Items that Council has covered to date in 2010:

- ◆ SAF Ring Program: The SAF ring program has been launched! An announcement of the program was prominently featured in the June issue of the *Forestry Source*. Special ring pricing is in effect through July 30, so be sure to “check it out”! The SAF ring program is intended to build professional forester recognition, and also designed to establish a new “tradition” to welcome and commend the commitment of graduating forestry students as they enter into the profession.
- ◆ SAF Paver Program: Also announced in the June issue of the *Forestry Source* was the new Gifford Pinchot Forestry Building Paver Program, which was approved by Council earlier in the year, and is intended to generate funding to complete a variety of necessary maintenance and restoration projects at SAF’s national headquarters office. Please consider purchasing a commemorative paver and supporting this much-needed effort!
- ◆ Proposed Haiti Reforestation Project: You may recall that SAF submitted a Grant proposal to explore potential reforestation projects in Haiti, in wake of the devastating earthquake that occurred there earlier this year. After further interaction with other international development experts and organizations, it has been determined that the best role for SAF is to help Haiti through coordination of SAF member’s expertise in tree improvement and nursery operations. Another positive outcome of this effort was that it has enabled SAF to strengthen relationships with various partners, which may lead to other potential international reforestation efforts in the future.
- ◆ National Office Staff: A few important staff changes have occurred at the National Office. Terry Clark, Director of Science and Education, has retired. New staff will soon be in place to fulfill the critical duties of this position. Additionally, as part of SAF’s new approach to advertising and corporate relations, this staff function has been outsourced to a new firm that will be creating new partnerships to enhance benefits to members and advertisers.
- ◆ 2010 Budget and Membership Dues: At this point in the year, 2010 revenues and expenses are on track. However, since the 2010 Budget approved by Council was a deficit Budget, Council and National Staff have been looking at a variety of options for increasing revenues. One of the options that Council has decided to pursue is to better structure SAF dues to ensure the long-term financial stability of SAF. Based on a dues plan that was adopted and approved by Council back in 1997 (but wasn’t fully implemented), dues would be structured so that a

planned 15 percent increase would be implemented every five years to compensate for inflation. This would allow SAF to keep up with increasing operational costs, and members would know what to expect in regards to planned dues increases. The proposed change would take effect in 2012 if approved. Council agreed to present this dues proposal for consideration at the House of Society Delegates (HSD) meeting at the Albuquerque Convention, and to follow up on the proposal at the December 2010 Council meeting.

♦ *Student Loyalty Program*: Council also agreed to abolish the graduate loyalty dues program as it currently exists, and to create a new incentive program for students to become SAF members. Student members would be charged the student rate until they are employed in a forestry or forestry-related field. Once they have secured their first employment in the field of forestry, they would be moved into the new members rate for five years, after which they would be pay the full membership rate. The intention is to increase the number of graduating students who are members of SAF while they search for their first professional position.

♦ *Strategic Planning*: Council continued its efforts to refine and “institutionalize” the Strategic Planning process at the June meeting to ensure SAF appropriately addresses the highest priority issues facing the profession. Part of this effort is to develop the appropriate processes to incorporate emerging issues that are identified through the Forest Science and Technology Board (FSTB), the Committee on Forest Policy (CFP), or through any other unit of SAF.

♦ *Policy*: Council had an extensive discussion on current legislative and Environmental Protection Agency (EPA) proposals related biomass energy and offsets. Based on the significant importance of this issue, Council approved the creation of a new Task Force to address Forest Climate Change Offsets and Use of Forest Biomass for Energy. Also approved were up-dates to two Position Statements: *State Programs to Credential Foresters*, and *Public Regulation of Private Forest Practices*.

♦ *Other Items*: Council voted to approve the 2010 Fellows nominations, and to make some refinements to the Fellows Nomination forms for 2011; agreed to amend the Ethics Committee Charter; received a progress report on plans for the Albuquerque Convention; and reviewed the current Membership Plan and some various options for membership plan alternatives.

The next Council meeting will be held at the Albuquerque Convention in October. As always, please feel free to contact me if you have any questions or concerns regarding any of the items above, or if there is anything else that you want to bring to my attention. I greatly appreciate hearing from you with any comments and suggestions you may have for advancing the mission of SAF. 🌲

## **The next newsletter deadline is September 15, 2010**

Send articles in Microsoft Word format and photos as JPG files to Allegheny News editor Jack Winieski via email at [ansaf@verizon.net](mailto:ansaf@verizon.net)

*For newsletters, officer information, committees/chairs, important documents, etc., visit the Allegheny SAF website: [www.alleghenysaf.org](http://www.alleghenysaf.org)*



## Foresters from India Study Forest Management in NW PA

March 30, 2010 – Thirty foresters from India recently visited the Allegheny National Forest region as part of a two-week training program. Yale University was awarded a contract to provide the training for mid career foresters from throughout India. The Yale School of Forestry and Environmental Studies had worked with the US Forest Service, the Forestry Sciences Lab and local private landowners on a cooperative forestry research project after the 2003 windstorm that blew down trees on thousands of acres in the region and toppled the Kinzua Bridge.

Based on relationships built during this cooperative research, **Mary Tyrell** (of the Yale Global Institute of Sustainable Forestry) asked local foresters to help organize a two-day field trip for the visiting Indian foresters. Under the direction of **Susan Stout**, Research Project Leader, two full days of tours and meetings were organized to highlight forest management in the Allegheny region.

The Indian foresters stayed at Olmstead Manor in Ludlow and met with **Leanne Marten**, ANF Supervisor for an overview of the US Forest Service planning process. They traveled to various sites on the ANF to see how the Forest Plan is being implemented through zoning of Management Areas. Each Management Area has specific objectives with site-specific management practices implemented to meet those objectives. The visitors met with USFS personnel responsible for timber, wildlife, wetlands, recreation and historic preservation activities. The tour guides also included **Sue Swanson** from the Allegheny Hardwood Utilization Group, **Kirk Johnson** of Friends of Allegheny Wilderness and **Eric Patton**, a supervisor of Millstone Township.

The second day began with a review of climate change, which may already be affecting India through melting of Himalayan Glaciers. The presentation focused on US Forest Service policies, strategies and models of climate change. The group then visited a research site where sugar maple decline and forest productivity have been studied for more than a decade. Stout and **Robert Long** (plant pathologist) gave talks on each of the study sites with help from **Anantha Prasad** and **Coeli Hoover** (research ecologists).

The day was completed with a tour of forestry practices on private land owned by the Kane Hardwood Division of Collins Pine Co. Land Manager, **Ned Karger**, led the group as they visited a mature forest stand, a shelterwood harvest, a young regenerated stand and a 20-year-old timber stand. The Indian foresters were particularly interested in the active logging job being harvested by **John Holt Logging of Kane**. The certification of Collins' forestlands under the strict standards of the Forest Stewardship Council was discussed. The visitors were also interested in the economics of private land management and Collins' recreational policies which keep the land open to the public for hunting, fishing and non-motorized recreation.

The Indian foresters were planning to stop at Niagara Falls on their way back to the Yale University campus in New Haven, CT. They were then were planning to visit forests in Massachusetts and throughout New England. The group expressed sincere appreciation for all of the people that helped make their educational trip through Pennsylvania a valuable learning experience. 🌿



# Allegheny Society of American Foresters

## Executive Committee Meeting

### June 23, 2010

The Executive Committee of the Allegheny Society of American Foresters met on June 23, 2010 at the Woodlands Resort and Conference Center in Wilkes-Barre, Pennsylvania during the annual Summer Meeting.

**Attendees:** Rachel Billingham (Chair Elect) - Presiding, Cecile Stelter, Robb Piper, Nick Lylo, Jack Winieski (Executive Director), Jeffrey Stuffle, Alex Day, Ned Karger, Kurt Gottschalk (Past Chair), and Dave McGill.

Rachel Billingham called the meeting to order at 2:00 pm. Robb moved to approve the minutes from the February Executive Committee meeting, as printed in *The Allegheny News*, and Cecile seconded the motion; minutes were approved.

**Treasurer's report:** The treasurer's report was not presented, but will be at a later date following entry of several deposits that need to be entered. Dave asked about how hosts of the ANSAF summer and winter meetings divide proceed from the meeting. The guidelines are specified in the meeting planning guidelines found on the ANSAF website.

**Executive Director's report:** Jack is in the final stages of the next issue of *The Allegheny News*. He will get some photos and write-ups from this meeting to incorporate into the newsletter. Discussion involving a new ANSAF Executive Director's position is ongoing. Kurt and Chair Mary Ann Fajvan have been working on a position description.

#### **Committee Reports:**

*Program Committee* - Nick acknowledged the contribution that Dick and the rest of the organizing committee for the excellent job they have done to pull together this summer's ANSAF meeting.

NJ SAF has had some conflicts in attending the summer meetings. Nick will follow up with them to see if meetings after July might work better for them and permit more of their members to attend.

Cecile briefed the EC on the upcoming ANSAF Winter Meeting that will be held in Clarion, PA. The meeting will be at the Clarion Inn, February 16-18, 2011. Three primary themes for this meeting are Silviculture, Recreation, and Prescribed Fire. National SAF President, Mike Lester and PA State forester, Dan Devlin are booked as speakers. Located right at I-80 exit 61, it will be an ideal location even if there is inclement weather.

Ned announced another meeting concerning the Emerald Ash Borer that is a multiagency endeavor. It will be a three day field workshop that brings participants nearly 1000 miles to see the impact of EAB and silvicultural prescriptions used to ameliorate devastation caused by this spreading insect pest.

*Awards Committee* - This committee needs a Chair. One possibility is that it could cycle year by year, periodically, or as an assignment among executive committee members. Rachel will ask Kurt Gottschalk to review the Charter of this committee, so that the duties of this committee are clear, in order to encourage participation.

There are two primary awards in the ANSAF. These awards are: 1) Forester of the Year, and 2) Outstanding Service to Forestry. Some ideas were given to increase the number of nominations for these awards. The webmaster, Jack Perdue, could send out notices to members in judiciously spaced emails to present the application and instructions for nominations on the webpage. A highlighted feature on the webpage could also provide a quick link to this information. It was noted the Howard Wurzbacher is familiar with the selecting process; Rachel will get instructions from him.

*(continued on page 8)*

(continued from page 7)

*Auditing Committee* - Rachel has handled new IRS accounting and reporting rules. ANSAF must report on all 12 accounts associated within the organizational units of ANSAF, which includes all chapters and divisions. There are two important items that must be within each of the separate accounts: 1) beginning balance for a given year must match the ending balance from the previous year, and 2) all income minus all expenses must equal the ending balance. DVD sales have been a bit of a problem because of the difficulty in estimating values of beginning and ending year inventory. Ned suggested that DVD costs are, or should be, expensed and not held as inventory.

*Communications Committee* - SAF calendars and t-shirts have been distributed by National SAF to various members in the National SAF initiative "Trees are the Answer." There will soon be resources related to this initiative on the SAF webpage that can be used to promote professional activities.

*Forest History Committee* - Alex reported that 15 boxes of ANSAF archives have been archived at the Petite Library at Penn State. The ANSAF EC had made arrangements with PSU to archive these documents and Jackie Esposito (PSU Archivist) has reported that the documents are now in climate controlled conditions. The agreement with PSU includes the statement that PSU owns the property. They keep the archive organized and maintained. Every 5 years we will be able to add more documents to the archive. The question was raised about how to decide whether and how to archive electronic files. Alex will ask Jackie for her recommendations on this topic.

### **Reports from other officers**

*Forest Science Coordinator* - Mary Ann Fajvan is looking for a new coordinator. No report on the success of this effort yet.

*Webmaster* - Jack Purdue is the webmaster for the ANSAF webpage. He has been very responsive to requests for changes and posts of important information.

*CFE Coordinator* - Many of the states have their own CFE coordinators to handle this duty. Some go straight to Louise Murgia and Pat Cillay at SAF National to get CFEs. Rachel will check with SAF National to see if there is a need for an ANSAF CFE coordinator.

### **New Business**

*Splitting of the Secretary/Treasurer position* - Steve Resh is currently the Secretary/Treasurer. The secretary has two primary responsibilities: 1) take notes and report to the Executive Director for inclusion in the Allegheny News, and 2) assure all nominees for leadership positions are eligible.

This position description is currently closely tied in with the conversation and planning for the new Executive Director duties. The main idea is to have the new Executive Director description have some responsibility for financial accounts. Kurt briefed the EC on progress he and Mary Ann have made. They have gone through historic records relative to the position of the Executive Director. There are several possibilities related to the position:

1. Abolish the position
2. Have a paid newsletter editor/production technician
3. Change the Executive Director to make it more of a business manager position to handle expenses, etc.
4. A hybrid of #2 and #3 where the position is responsible for both newsletter and financial oversight (in addition to the treasurer).

A comment was made that abolishing the position entirely would be detrimental to the ANSAF. The next step in this process is that Mary Ann will hold a conference call to discuss the issue including the job



description and the timeline for getting the position filled. Jack has graciously committed to remaining in place until the position can be filled.

### **Division/Chapter Reports**

*Pennsylvania Division SAF* - The PA Division is in the process of discussing the reorganization of its chapters to have a more efficient distribution of members, especially working to help those chapters with fewer members and stimulate more attendance at meetings, workshops, etc. Ned suggested that the PA division coordinate the discussion, develop a proposal, and submit it to the ANSAF EC.

*Keystone Chapter* - The chapter is in the process of revising bylaws to reflect the National SAF minimum standard bylaws. Two meetings are planned, one in October with a tour of a local pellet mill and one in winter 2011 to cover Marcellus shale.

*Northern Hardwood Chapter* - Had a meeting in Kane, PA in March.

*Pinchot Chapter* - Nick again stressed his appreciation for the Pinchot Chapter for putting this meeting together. There are 42-47 participants. Denise Bower-Cooke is the new chapter chairperson as of July 1. The chapter has conducted membership calls with some success. Some of the retired members have stepped up to help out in chapter activities.

*Plateau Chapter* - Already gave report on the Winter 2011 ANSAF meeting in Clarion, PA; recently conducted the "Walks in the Woods" program with local schools.

#### *Rothrock Chapter*

Had a recent field tour to discuss and view stream improvements. This workshop was done collaboratively with Trout Unlimited, the group that initiated stream improvements to the upper reaches of Spring Creek.

#### *Valley Forge Chapter*

January was the last meeting the chapter had with the US Department of Agriculture, visiting a research center concerned with biofuels. There are two upcoming meetings, one at a local tree farm and one at a wood craft museum.

#### *Western Gateway*

The chapter is in the process of planning a meeting to discuss the PA SAF reorganization.

#### *West Virginia Division SAF*

The Winter ANSAF meeting at Stonewall Jackson Resort was a success and the meeting ended in the black. A summer meeting is being planned for September 2-3, 2010 to explore issues related to landscape scale management. The meeting will be held at Hawk's Nest State Park.

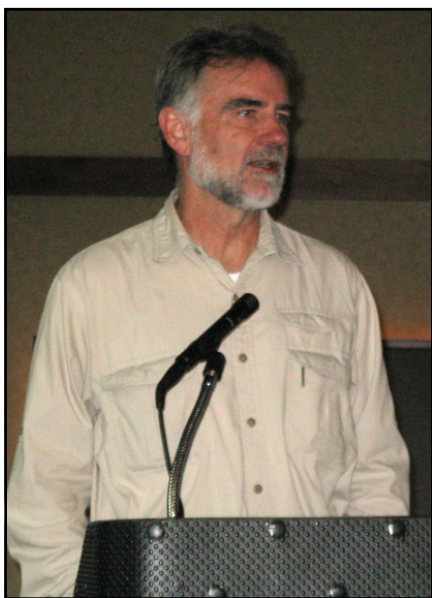
The meeting adjourned at 5:00 pm.

Respectfully submitted,  
*Dave McGill*

# Allegheny SAF Summer Meeting

By Nicholas Lylo, Pinchot Chapter Chair

The 2010 Allegheny SAF summer meeting, hosted by the Pinchot Chapter, was held June 23-25 at the Woodlands Inn and Resort in Wilkes-Barre, PA with the theme “*The Poconos: Forest Use and Management in the Wildland-Urban Interface.*” Forty eight members attended the three day event that focused on the challenges that foresters face in managing a forest resource that is increasingly under pressure from urban sprawl and demands for outdoor recreation opportunities.

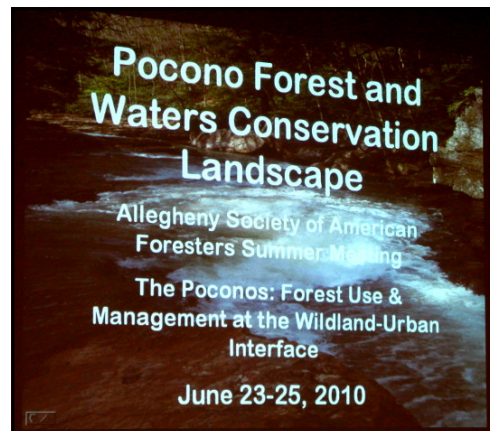


The meeting began with opening remarks from SAF President **Mike Lester** who gave us an update on the national SAF picture. We then heard from **Carl Wilgus** of the Pocono Mountain Visitor Bureau who set the stage with a talk on the importance of the region’s forest to tourism and **Drew Gilchrest** of the Natural Land Trust on land protection in the Poconos.

The field trip featured a tour of the Pocono Mountains with stops on the Lackawanna and Delaware State Forest, an overview of The Nature Conservancy’s prescribe fire program by TNC Fire manager **Pat McElhenny**, and wrapped up at the Francis E. Walter Dam with a discussion with **George Sauls**, Area Manager for Army Corps of Engineers, **Dave Madl**, Park Manager of PA Bureau of State Parks, **Gerry Kapral**, WCO with PA Game Commission, and **Joe Vinton**, Manager of Bear Creek Preserve for The Natural Lands Trust, on how a flood protection dam and surrounding forest land ownership created recreational opportunities around the dam and downstream.

The final day wrapped up with presentations on forest management in residential developments by **Marian Keegan**. **Ellen Roane** of PA Environmental Council presented the Pocono Forest and Water Conservation Landscape Initiative. **Paul Roth** from the PA Bureau of Forestry discussed carbon Offset, and **Todd Sampsell** talked about The Nature Conservancy program for landowners to obtain forest certification through marketing carbon credits.

Everyone in attendance left with new knowledge of the Pocono Mountains and the importance of the forest to the region for not only traditional forest values but also to outdoor recreation and tourism. 🌿









# Allegheny SAF Summer Meeting Highlights

All meeting photos courtesy of Alex Day and Charlie Newlon













## Timbers Benefiting Trout

By Brent Harding, Rothrock Chapter Chair

The Rothrock Chapter of SAF has expanded its Fall Field Tours into the Spring season. On Wednesday, May 26, 2010 approximately twelve Rothrock Chapter SAF members gathered in the warm afternoon sun to view and learn about stream restoration projects along the famous Spring Creek in Central Pennsylvania.

The Spring Creek Chapter of Trout Unlimited and the PA Fish & Boat Commission planned and led the multiple site tour. Attendees were shown how locally grown and harvested pole sized conifer trees, ideally Japanese Larch and Eastern Hemlock, were used to create mud sills and log deflectors. The



devices were installed along several stretches of Spring Creek between the boroughs of State College and Bellefonte in 2007. Since the implementation of the devices, the number of Spring Creek brown trout redds (nests) have been on the rise. In addition to in the stream structures attendees also examined established riparian buffers, highway runoff storm flow abatement and livestock control.

At the last stop of the tour **Joe Boston**, Spring Creek Chapter of TU member, demonstrated fly fishing techniques and local fly patterns as the SAF members cooled down with complimentary refreshments.

The Rothrock SAF Field Tour series is in its third year and committed to continue to offer informative programs that promote fellowship between local professional foresters. Please contact **Brent Harding**, Rothrock Chapter Chair, at [bah173@psu.edu](mailto:bah173@psu.edu) for more details about the past or upcoming tours. 🌿

## Steve Koehn Receives Arbor Day “Champion Award”



**Steve W. Koehn**, MD-DNR Director/State Forester, of Annapolis MD, received the **Arbor Day Foundation 2010 “Champion of Trees Award.”**

The award is given for the advancement of public forestry policy. Koehn played a vital leadership role in the passage of the **Maryland Sustainable Forestry Act of 2009**. This historic act recognizes that an important way to clean Maryland’s vast Chesapeake Bay ecosystem is through healthy forests.

The law could change the way many states view watershed restoration. It also encourages Maryland landowners to protect their forested areas and practice sound sustainable forestry and stewardship.

Koehn has been a longtime champion of trees, with 26 years of experience in forest resource management. He has served as Maryland’s Department of Natural Resources Forest Service Director for nine years. 🌿

# Birds and Forested Habitat Research at Forestry Forum

By Ned Karger Chair Roach Bauer Forestry Forum Steering Committee

Forest Interior birds just need more large blocks of mature forest to thrive? No. Actually early successional forests are also critical habitat for many of these species during parts of the year. New research results were presented by **Scott Stoleson** of the USFS Northern Research Station in Warren, PA at the recent Roach Bauer Forestry Forum. His presentation, "The Kindest Cut, Regenerating Forests as Critical Habitat for Forest Birds," focused on forest interior species such as the Wood Thrush, Overbird, Scarlet Tanager, and a group of Warblers known to breed in late successional forests.

Forest bird populations have been declining recently and several factors may be influencing these trends. Research and management are complicated by the fact that these species migrate long distances. So, declines may be related to problems in summer habitat (forest fragmentation) or wintering grounds (habitat loss & degradation) or migration routes (loss of stop over habitat) or all three. Stoleson noted that timber harvesting in forested landscapes was not forest fragmentation.

In our region, the summer habitat, birds spend only a portion of their time breeding (May-July). Much of the summer is spent in the post breeding season (July-September) and very little research has been done during this period. This post breeding season is critical to birds as the young grow and learn to forage and avoid predators and the adults molt and grow new feathers. Both also accumulate body fat which will be necessary for successful migration to the wintering grounds.

It has been assumed that good breeding season habitat was good post-breeding habitat. Recent research shows that this is not the case and birds have different needs and will use different habitats during these two periods. Forest interior birds begin appearing in clearcuts and early successional habitats in mid summer and can become the most abundant species in this habitat as summer progresses.

These birds were found to be in significantly higher numbers in the early successional habitats than in the forest interior during the post breeding season. The birds in the

early successional habitats had more stored fat, less parasites and more rapid molt progression than those that stayed in the interior.

During September when species that nest farther north were migrating through the study areas, they were also significantly more abundant in the early successional habitats. Birds with the highest fat reserves were found in these habitats.

Stoleson's research has clearly shown that early successional habitats are extremely important for the post breeding season for forest interior species and as migratory stop over sites for birds that breed farther north.

This research has significant management implications as the area in early successional habitat in the NE US is at its lowest point since records have been kept. This habitat may be *necessary* to sustaining some forest interior species. Stoleson suggested one way to provide this important habitat is to keep 10% of forest in this condition at all times through sustainable even age silviculture. Stoleson's research included stands 15-114 acres in size with variations in residual trees. He is currently looking at the implications of patch size and residual overstory on bird use during the post breeding season.

As is the tradition of the Roach Bauer Forestry Forum (RBFF) Stoleson was presented a black cherry Biltmore stick by **Ned Karger**, RBFF Steering Committee chairman. A sale of maple syrup donated by Firth Maple Products raised money for the Bob Bauer Scholarship Fund.

The next RBFF will be held in October at the Kane Country Club. **Michael Barton** will give a presentation on forestry issues related to wind energy development. 🌿





## Roach Bauer Forestry Forum 25<sup>th</sup> Anniversary DVD

By Ned Karger, Chair RBFF Steering Committee

The 25<sup>th</sup> Anniversary Roach Bauer Forestry Forum (RBFF) held in October 2009 was a great success with a large crowd and great speakers. **Blaine Puller**, **Jeff Kochel** and **Ken Kane** entertained the crowd with observations and funny stories of "Changes in Forest Management over the Last 25 Years." The speakers who have over 100 years of forestry experience in NW PA kept the crowd smiling and laughing with their thought provoking presentations.

Now this 25<sup>th</sup> anniversary Forum is available on DVD. **Todd Ristau** of the USFS Forestry Sciences Lab volunteered his time and expertise to record and produced a great video of the Forum. The DVD also includes two bonus features. First is an historical review of the 51 Forums held since 1984 including all titles and speakers combined with a great selection of photographs. The second feature is a historical power point presentation compiled from photos in the extensive collection of **Keith Horn**. Both of these presentations were previewed at the October 2009 Forum. Todd has added a musical soundtrack to enhance the viewing. **Steve Hawkes** of LandVest donated the reproduction and packaging of the DVD and cover artwork.

The DVD can only be obtained by making a \$25 donation to the **Bob Bauer Scholarship Fund**. The Scholarship Fund was established in 2004 for forestry students at Penn State in honor of Bob Bauer, PA Game Commission forester who served for almost 15 years as the chair of the Ben Roach Forestry Forum Steering Committee. The Forum was renamed the Roach Bauer Forestry Forum after Bob's untimely death in 2003. The Steering Committee was instrumental in establishing the fund and has raised money through the sale of apple cider and maple syrup, and raffles of artwork at the Forums. To date the Forum has raised over \$7,000 for the scholarship fund.

You may obtain the DVD and make donations to the scholarship fund when registering for the Forum or by contacting Ned Karger at [nkarger@collinsco.com](mailto:nkarger@collinsco.com). The copies of the DVD will also be available at the upcoming Forum to be held in October at the Kane Country Club. 🌲

## Casey's Forestry Concepts

"A New Kind of Consulting"

**Income Tax Reduction • Conservation Education  
Restructuring Plans to Reduce Tax • Ordinance Development**

Lloyd R. Casey  
1263 Palomino Drive Phone: 610-436-9424  
West Chester, PA 19380 email: [lrcasey@comcast.net](mailto:lrcasey@comcast.net)

**"I got into this business because the tree protectors my customer was using killed over half his trees."**

Tom Mills  
Tree Pro President



"So I started designing and testing my own protectors. Eventually, I came up with a design that did the job it was supposed to.

"There are just too many variables that affect tree health and growth to rely on guesswork. To truly know what works, you must exhaustively test each product.

"That same philosophy applies to all our products: time-release fertilizer, root dip, inoculants, soil softening agents, weed mats, etc.

**Choose tree enhancement products with the same care you choose your trees.**

"Planting trees can be a huge investment in time, money and effort. To not protect them from deer and other animals, to not give them the best start you possibly can, is to throw caution to the wind."

Ask about our \$99 Plantation Starter Kit, which includes 10 GSP black walnut trees along with all the thoroughly tested tree enhancement products you need to get started.

### Tree + Pro

3180 West 250 North  
West Lafayette, IN 47906  
800-875-8071

[www.treepro.com](http://www.treepro.com)  
[sales@treepro.com](mailto:sales@treepro.com)



## An Invitation to Clarion, PA

By Howard Wurzbacher & Jack Buckler

The Plateau Chapter will be hosting the upcoming **2011 Allegheny SAF Winter Meeting, February 16-18, 2011 in Clarion, Pennsylvania.** All members of the Allegheny SAF and guests are invited to attend; to enjoy the beauty of winter in northwestern Pennsylvania, the rich history of Pennsylvania's Cook's Forest Region, and share fellowship among other forestry professionals. Clarion is located along Pennsylvania's I-80 corridor, and can be easily reached from the east, southeast, and all areas within the Allegheny SAF's five-state region.

The meeting will be held at the **Clarion Holiday Inn**, which has a reputation for excellent food and accommodations. The hotel will be dedicating their entire facility to our SAF meeting. Information about the Clarion Holiday Inn and highlights of the area and local attractions can be found at the hotel's website, [www.hiclarion.com](http://www.hiclarion.com).

The three themes of the Allegheny SAF 2011 Winter Meeting will include **Silviculture**,

**Recreation, and Prescribed Fire.** A variety of dynamic speakers are planned for informative and practical presentations on the three meeting themes, which will be applicable across a range of forestry interests and ownerships.

Current **National SAF President Mike Lester** and **Pennsylvania State Forester Dan Devlin** will be featured among our list of speakers. Meeting plans encourage critical thinking with interaction among presenters and attendees.

Program for Thursday evening's **Awards Banquet** will offer an entertaining look back at the history of the area's forests. As always, the **Reginald Forbes Art Contest, student quiz bowl, vendor display area**, and a **silent auction** are among the meeting activities.

Please mark your calendars NOW and plan to join your professional peers at the 2011 Winter Allegheny SAF meeting. Come to share and gain knowledge, enjoy fellowship with professional friends, and participate in SAF's mission to advance the practice of forestry among ourselves and the public. ❁



**Society of  
American Foresters**

**National  
Convention**

**Albuquerque, New Mexico**

**October 27–31, 2010**

**Fountains Now Sells and  
Supports TwoDog Software**



- ◆ Flexible Forest Inventory Software
- ◆ Works Seamlessly From Field to Office
- ◆ Tree, Plant & Wildlife Data Collection
- ◆ Point, Plot, 100% & Double Point Sampling
- ◆ Fast and Friendly Service and Support
- ◆ Comprehensive Reports

Call 1-800-455-2094  
[twodog@fountainsamerica.com](mailto:twodog@fountainsamerica.com)  
[www.fountainsamerica.com/twodog](http://www.fountainsamerica.com/twodog)

**fountains**

# Emerald Ash Borer Tour of Ohio and Michigan Planned

Submitted by Ned Karger



It has been said that it is not a matter of “IF” the Emerald Ash Borer (EAB) spreads through PA but “WHEN.” How can forests be managed after an infestation? What should be done before EAB strikes? What will the future forest stands look like? Can you utilize ash timber after an infestation? How do quarantines affect moving and marketing forest products? Are there any biocontrol agents that affect EAB?

The foresters in Ohio and Michigan have been dealing with these questions for the past few years and have some valuable experiences to share. Currently a tour is being organized for PA foresters to visit Ohio and Michigan and see first hand the effects of EAB.

The tour is planned for Monday, August 30 to Wednesday September 1. The tour will leave PA on Monday morning and travel to the Toledo area of NW OH with some stops including the Maumee State Forest to see EAB infested forests and discuss insect detection, research and management issues. A service forester will then lead the tour through managed forests on public and private lands.

Tuesday morning will focus on Michigan with a stop at the APHIS lab at Brighton MI where research plots on EAB and biological controls are being studied. APHIS is the agency in charge of quarantines and the movement of forest products from EAB infested areas. New detection tools and the latest on biocontrols will be introduced.

Tuesday afternoon will focus on a wide variety of silvicultural treatments and forest stand conditions from heavy mortality areas to relatively healthy stands. The tour will visit numerous

woodlots with local foresters, forest health specialists and landowners. Utilization of forest products will be fully covered. There will be plenty of time for Q & A and discussion of management options.

Wednesday morning will focus on Ohio research areas and timber management in EAB infested areas. Timber management in areas where EAB is not yet present but expected in the next few years may also be visited.

The tour will return to PA on Wednesday afternoon with a stop at Mercer to discuss early detection on the leading edge of the infestation and to learn about the PA Bureau of Pest Management’s approach to the EAB infestations. SAF Continuing Education credits will be available.

The tour will include bus/van transportation, beverage breaks and logistics. Lodging on Monday and Tuesday nights will be in the Toledo area at a local hotel with breakfast provided. A variety of dinner options will be available within walking distance. Lodging reservations and dinner will be the responsibility of the attendees.

The tour is being organized by an ad hoc group of volunteers including **Tim Pierson** (Penn State Cooperative Extension), **April Moore** (Allegheny National Forest), **Barb McGuinness** (USFS Forestry Sciences Lab) and **Ned Karger** (Kane Hardwood/Collins Pine Co.). They are being assisted by **Amy Stone** (Ohio State EAB Outreach Team), **Jessica Simons** (Michigan RDC) and **Don Eggen** (PA DCNR) as well many other researchers, service foresters, entomologists and landowners from Ohio and Michigan. Final arrangements are still being made with a flyer to be mailed out in early July. An announcement will be sent via SAF email list and will be posted on the Allegheny SAF website. For more information check the website at [www.alleghenysaf.org](http://www.alleghenysaf.org) or contact Penn State Cooperative Extension at 814-887-5613.

Save the dates on your calendar and don’t miss this opportunity to learn more about EAB, to see the effects first hand, to see management options and results, and to travel with some fellow foresters from Pennsylvania. 🌿

## Coming Events

### September

15 Deadline for the Fall 2010 issue of *The Allegheny News*. Send articles in Microsoft Word Format to [ansaf@verizon.net](mailto:ansaf@verizon.net)

### October

Fall 2010 Roach-Bauer Forestry Forum, featuring Michael Barton on Wind Energy Development on Managed Forest Lands. Contact Ned Karger at 814-837-0121 or [nkarger@collinsco.com](mailto:nkarger@collinsco.com)

13 Fall MD/DE SAF Meeting

27-31 2010 National SAF Convention, Albuquerque, NM. Registration at [www.safnet.org](http://www.safnet.org)

### November

5-6 MFA's 34<sup>th</sup> Annual Conference, "Maryland's Working Woodlands" Gaylord National Conference Center, National Harbor, MD: 301-895-5369 or [director@mdforests.org](mailto:director@mdforests.org)

### December

15 Deadline for the Winter 2010-11 issue of *The Allegheny News*. Send articles in Microsoft Word Format to [ansaf@verizon.net](mailto:ansaf@verizon.net)

### February 2011

16-18 Allegheny SAF Winter Meeting focusing on Silviculture, Recreation and Prescribed Fire, at the Clarion Holiday Inn, Clarion, PA. More information to follow.

### Future Allegheny SAF Meetings

Winter 2011: Plateau Chapter

### Future SAF National Conventions

2010: Albuquerque, NM – October 27-31

2011: Waikiki, Oahu, HI – November 2-6

## Allegheny SAF Committee Chairs

### Auditing

Dennis M. Galway, CF  
PO Box 789  
Bernardsville, NJ 07480  
(h/o) 908-696-9133  
(f) 908-696-9134  
[dgalwaydsl@verizon.net](mailto:dgalwaydsl@verizon.net)

### Awards

Howard G. Wurzbacher  
17374 N. Main Street Ext.  
Titusville, PA 16354  
(o) 814-484-9954  
(h) 814-589-7538  
[hwurzbache@state.pa.us](mailto:hwurzbache@state.pa.us)

### Communications

Ronald R. Farr, CF  
6 Ricker Road  
Newfoundland, NJ 07435  
(o) 973-831-3358  
(h) 973-208-8165  
[rfarr@njdwsc.com](mailto:rfarr@njdwsc.com)

### Continuing Forestry Education Coordinator

David W. McGill, CF  
Appalachian Hardwood Ctr  
Percival Hall 322  
PO Box 6125  
Morgantown, WV 26506-6125  
(o) 304-293-2941  
(h) 304-296-5530  
(f) 304-293-7553  
[dmcgill@wvu.edu](mailto:dmcgill@wvu.edu)

### Education

Mark R. Webb  
11021 Route 6  
Union City, PA 16438  
(o/h) 814-663-5393  
(f) 814-663-4008  
[mrkrwebb@earthlink.net](mailto:mrkrwebb@earthlink.net)

### Education Endowment Fund

Ronald J. Sheay  
12 Glenwood Lane  
Stockton, NJ 08559  
(h) 609-397-7886

### Forest History

Ronald J. Sheay  
12 Glenwood Lane  
Stockton, NJ 08559  
(h) 609-397-7886

### Forest Science Coordinator

Mary Ann Fajvan  
USFS NE Station  
180 Canfield Street  
Morgantown, WV 26505  
(o) 304-285-1575  
(h) 304-892-4515  
[mfajvan@fs.fed.us](mailto:mfajvan@fs.fed.us)

### Membership

Rachel R. Billingham, CF  
95 Black Walnut Drive  
Etters, PA 17319  
(o) 717-783-0385  
(h) 717-932-4802  
[rbillingha@state.pa.us](mailto:rbillingha@state.pa.us)

### Nominations

Kurt Gottschalk, CF  
180 Canfield Street  
Morgantown, WV 26505  
(o) 304-285-1598  
(h) 724-627-4161  
(f) 724-627-8540  
[kgottschalk@fs.fed.us](mailto:kgottschalk@fs.fed.us)

### Policy & Legislative (PLAN)

Timothy A. Kaden  
724 Green Winged Trail  
Camden, DE 19934  
(h) 302-697-7066  
[Greatnowandthen@yahoo.com](mailto:Greatnowandthen@yahoo.com)

### Program

Ned R. Karger  
409 W. Hemlock Avenue  
Kane, PA 16735  
(o) 814-837-6941 ext. 21  
(h) 814-837-6819  
(f) 814-837-7506  
[nkarger@collinsco.com](mailto:nkarger@collinsco.com)

### Student Quiz Bowl

Michael Powell  
107 Sandstone Lane  
Spring Mills, PA 16875  
(h) 814-422-8679  
(o) 814-863-1113  
(f) 814-865-3725  
[mjp175@psu.edu](mailto:mjp175@psu.edu)

### Tellers

Gary W. Miller  
USDA Forest Service  
180 Canfield Street  
Morgantown WV 26505  
304-285-1521  
(f) 304-285-1505  
[gwmiller@fs.fed.us](mailto:gwmiller@fs.fed.us)



# Allegheny Society of American Foresters

## Officers

<b>Chairman</b> Mary Ann Fajvan 180 Canfield Street Morgantown, WV 26505 (o) 304-285-1575 (h) 304-892-4515 mfajvan@fs.fed.us	<b>Chairman-Elect</b> Rachel R. Billingham, CF 95 Black Walnut Drive Etters, PA 17319 (o) 717-783-0385 (h) 717-932-4802 (f) 717-783-5109 rbillingha@state.pa.us	<b>Secretary/Treasurer</b> Steven F. Resh 12401 Willowbrook Road Cumberland, MD 21502 (o) 301-784-5307 (h) 301-722-2834 sresh@allegany.edu	<b>Past Chairman</b> Kurt Gottschalk, CF 180 Canfield Street Morgantown, WV 26505 (o) 304-285-1598 (h) 724-627-4161 (f) 724-627-8540 kgottschalk@fs.fed.us
--	--	--	---

## Executive Committee

Ned R. Karger, CF 409 W. Hemlock Avenue Kane, PA 16735 (o) 814-837-0121 (h) 814-837-6819 (f) 814-837-7506 nkarger@collinsco.com	David W. McGill CF Appalachian Hardwood Ctr West Virginia University Morgantown, WV 26506-6125 (o) 304-293-2941 (h) 304-296-5530 dmcgill@wvu.edu	Cecile Stelter CF 323 N. State Street North Warren, PA 16365 (o) 814-723-0262 (h) 814-827-3758 (f) 814-723-0270 cstelter@state.pa.us	Robert C. Webster, Jr. CF 13808 Oakleaf Drive SW Cumberland, MD 21502-6526 (o) 301-777-2024 (h) 301-729-6549 (f) 301-777-2197 bwebster07@atlanticbb.net
---	--	--	---

## Executive Director

Jack Winieski, CF  
PO Box 699  
Dillsburg, PA 17019-0699  
(o/f) 717-432-3646  
ansaf@verizon.net

## Council Representative

Kenneth W. Jolly  
6 Landings Court  
Annapolis, MD 21403  
(o) 410-260-8502  
(h) 410-263-1989  
(f) 410-260-8595  
kjolly@dnr.state.md.us

---

## Division Chairs

<b>Maryland/Delaware</b> Robert C. Webster, Jr. CF 13808 Oakleaf Drive SW Cumberland, MD 21502-6526 (o) 301-777-2024 (h) 301-729-6549 (f) 301-777-2197 bwebster07@atlanticbb.net	<b>New Jersey</b> Robert Rae Williams, CF 812 Bayer Avenue Deptford, NJ 08096 (o) 856-307-7800 (h) 856-239-9313 (f) 856-307-7805 bob@landdimensions.com	<b>Pennsylvania</b> Douglas J. D'Amore 15 Crawford Lane Lock Haven, PA 17745 (o) 570-923-6011 (h) 570-748-0264 (f) 570-923-6014 ddamore@state.pa.us	<b>West Virginia</b> Aaron Plaughter, CF MeadWestvaco PO Box 577 Rupert, WV 25984 (o) 304-392-1606 (c) 304-573-9171 aaron.plaughter@mww.com
---	--	--	--

## Chapter Chairs

<b>Keystone</b> Stephen E. Wacker RR1 Box 486 Blain, PA 17006 (o) 717-536-3191 (h) 717-536-3066 (f) 717-536-3335 wacker@pa.net	<b>Northern Hardwood</b> John D. Saf 429 Haines Street Kane, PA 16735-1434 (o) 814-837-9391 (h) 814-837-8439	<b>Pinchot</b> Nicholas Lylo 281 Lehigh Street Wilkes-Barre, PA 18702 (o) 570-945-7133 (f) 570-963-3048 nlylo@state.pa.us	<b>Plateau</b> John E. Daugherty, CF 5024 Route 208 Knox, PA 16232 (h) 814-797-1499 (f) 814-797-5165 jkdocs@alltel.net
<b>Rothrock</b> Brent Harding PSU Forest Management 205 Forest Resources Lab University Park, A 16802 (o) 814-865-7422 (h) 814-235-9198 bah73@psu.edu	<b>Valley Forge</b> Jeffrey Stuffle 186 Trappe Road Collegeville, PA 19426 (o) 610-582-9660 (h) 610-489-7461 jstuffle@state.pa.us	<b>Western Gateway</b> Robb W. Piper, Jr., CF 401 Candlelight Dr., Suite 221 Ebensburg, PA 15931 (o) 814-472-2120 (f) 814-472-0686 piper@co.cambria.pa.us	

# The Allegheny News

Publication of the  
Allegheny Society of American Foresters  
[www.alleghenysaf.org](http://www.alleghenysaf.org)

**Jack Winieski, Editor**

P.O. Box 699  
Dillsburg, PA 17019-0699

NONPROFIT ORG.  
U.S. POSTAGE  
**PAID**  
HARRISBURG, PA  
PERMIT NO. 577



# A Sustainable Forest System Needs the Shadow of a Forester