

Rural and Urban Ecosystem Health

2017 Allegheny SAF Winter Meeting

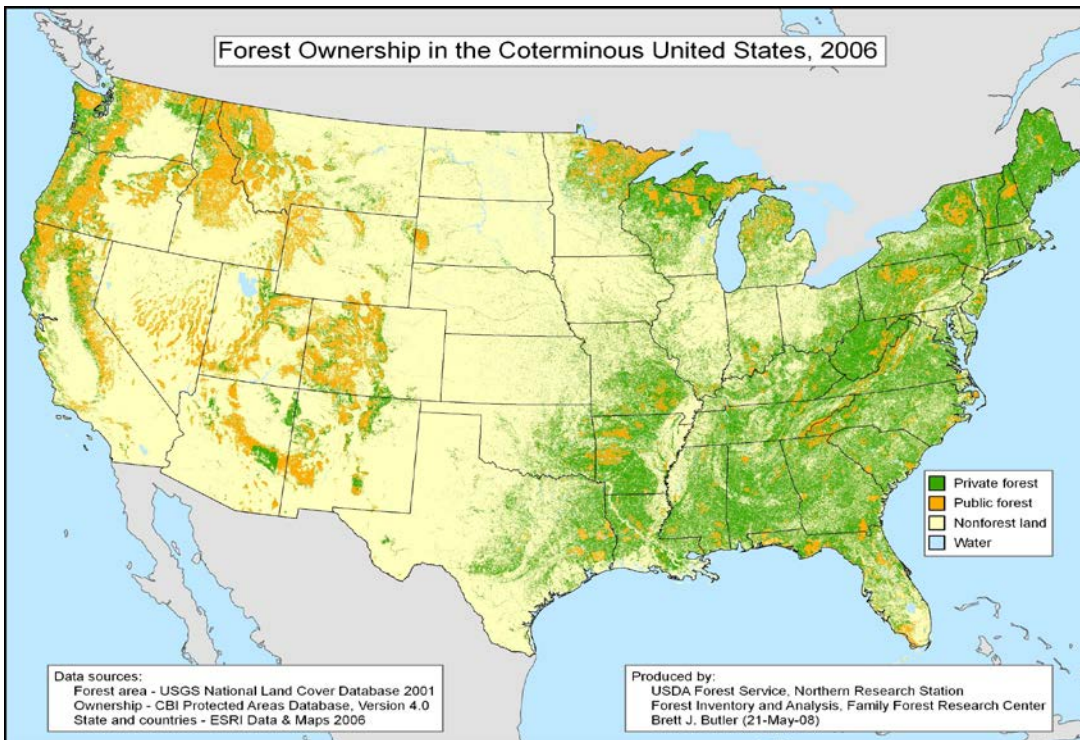
February 17, 2017

Jim Finley, Ibberson Professor and
Director, Center for Private Forests

Department of Ecosystem Sciences
and Management

The Nation's Forests*

- Forest land 751 million acres
- Privately held 420 million acres (56%)
 - 159 million acres (38%) corporations, conservation organizations, clubs, Native American Tribes
 - 261 million acres (62%) held by 10 million individual and family forest landowners





“Unless we practice conservation, those who come after us will have to pay the price of misery, degradation, and failure for the progress and prosperity of our day.”

Gifford Pinchot, 1910. *The Fight for Conservation*



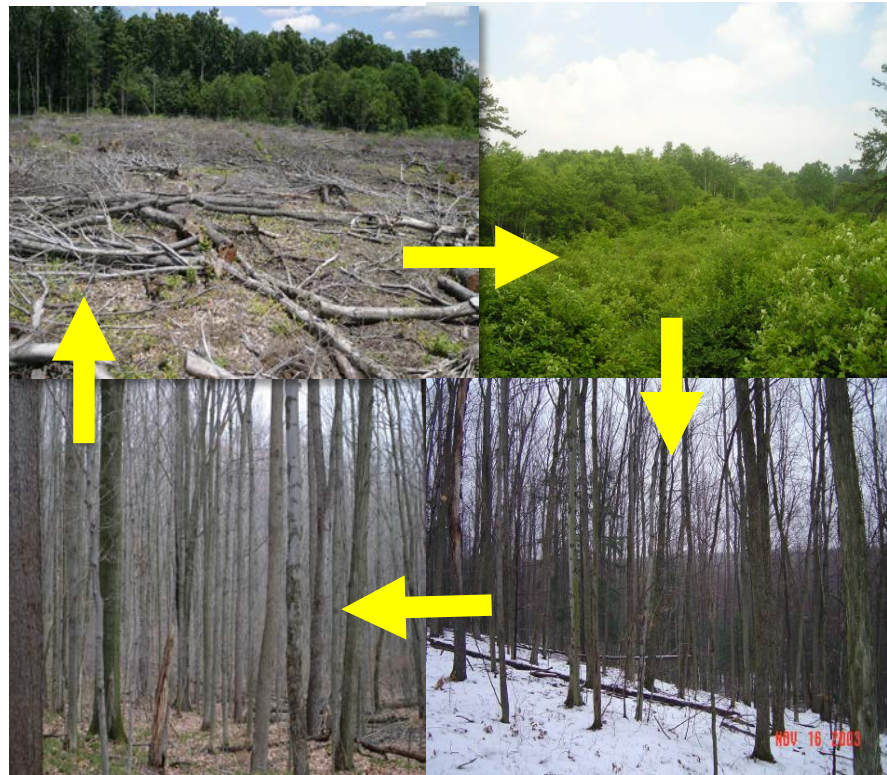
Threats to Ecosystem Health

1. Fire (South and West)
2. Insects and Disease
3. Changing Weather
4. Invasive Species
5. Lack of Stewardship
6. Decreasing Forests Market and Infrastructure

Threats to Conservation

Vision to Enhance Forest Health

1. Focus – “Keep Forests Forest”
2. Prioritize – Landscapes, Think Big
3. Desired Outcomes – “Aspire to Inspire”









“... there is grave danger that the best of our forests will all be gone before their protection and perpetuation by wise use can be begun. The spread of a working knowledge of practical forestry is likely to be too slow.”

Gifford Pinchot, 1906.

Primer of Forestry: Part II Practical Forestry

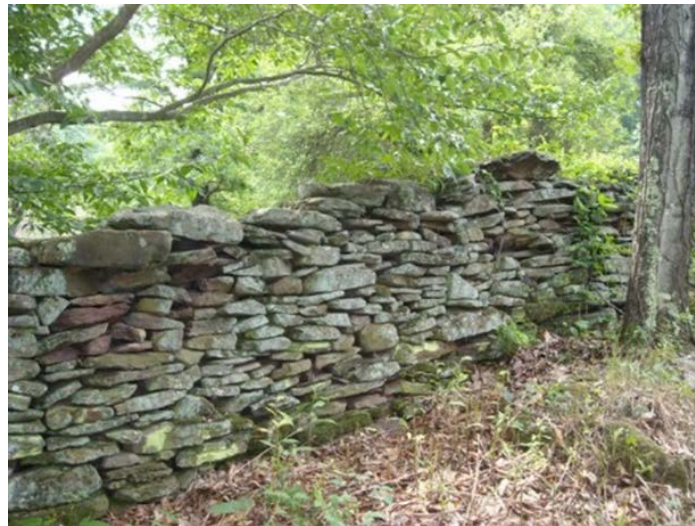
We MUST engage the
Conversation
about
Conservation



Land Stewardship

“We must conceive of stewardship not simply as one individual’s practice, but rather as the mutual and intimate relationship, extending across generations, between a human community and its place on earth.”

John Elder, *Inheriting Mt. Tom*



Consider Ecosystem Values

- Economic
- Ecological
- Social

Bringing People to Conservation?

- Understand values – Shared and Unshared
- Create people and public center conversations
- Construct new knowledge and shared understanding - DIALOGUE
- Develop communities with shared values/interests
- Look toward tomorrow



Become a Politician

Simplify the Message

Stay on Message

Make it a Cause

Make Science Palatable

Push Science!

First! Make People Comfortable

Trust

Create a
Conversation
about Conservation

Connect with People and
Professionals



Community

Community happens and is most visible when people care about each other and the place where they live.



Looking in the Rearview Mirror

- First, there was Curiosity
- Concern
- Chaos
- Cooperation
- Led to Conservation

Looking to Forward –
Making It Happen

SAF Community – All Communities

- Serve the Community (Members)
- Encourage Excellence
- Advance Science
- Advocate (for Professionalism)
- Develop Diversity (bring new . . .)
- Shape the Future

Foresters have a responsibility to manage land for both current and future generations. We pledge to practice and advocate management that will maintain the long-term capacity of the land to provide the variety of materials, uses, and values desired by landowners and society.

SAF Principles and Pledges, 2000











PennState
College of Agricultural Sciences







Where do we work?



Where do we work?

“Unless we practice conservation, those who come after us will have to pay the price of misery, degradation, and failure for the progress and prosperity of our day.”

Gifford Pinchot, 1910. *The Fight for Conservation*



