



"Natural Resources Communications".

The outreach and public involvement in the effort to protect the Kittatinny Ridge as a large scale landscape.

Nature is essential to our quality of Life

We demonstrate that through:

Land Protection

Watershed protection & restoration

Urban Greening

Trails & Preserves

Environmental Education





SERVING THE COMMUNITIES OF SOUTHERN SCHUYLKILL COUNTY WEEKLY

South Schuylkill News

Thursday November 3, 2016 / \$1.00

Like/Facebook-SSN

Couple takes big step to protect nature



SPECIAL TO SOUTH SCHUYLKILL NEWS: A

Dedication to the environment inspires a Wayne Township family to protect their 342 acres of farmland from development.

BY SHEA SINGLEY
SOUTH SCHUYLKILL NEWS

Dennis and Pauline "Polly" Fehr purchased their first 126-acre farm in 1967 for \$18,500.

Over the decades, the Fehrs have purchased an additional 200-plus acres from neighboring farms, and those 342 acres in Wayne Township are now protected from development in Berks Nature's second largest conservation easement.

"My father was living when I first bought this, and I told him I would own the whole (Schwartz) valley. Well I wasn't able to accomplish that," Den-

nis Fehr said. "We put it in a conservancy. It's not just that you take away the rights to building development, we've insisted on a lot of specifics like you can't cut a tree down."

"Unless it's diseased or dead," Polly Fehr added.

Keeping nature pure

The Fehrs' top priority is aiding the environment. "When I bought this farm, this whole forest was clear-cut and today yet, it's not near mature," Dennis said.

A variety of apple trees line the driveway to the Fehrs' home. Dennis has been busy planting trees throughout the



property he oversees.

"I don't own it. Never did own it. I rented it," Dennis said of the property. "You never own nothing. You're not going to take it with you. I'm not going to take this farm. It's not mine. I just control it while I live. If you're going to

control it, take care of it, for crying out loud."

There are four homes on the Fehrs' property, and steps were taken to be as environmentally clean as possible with two solar-energy systems, mostly LED lighting and four geothermal heat pumps.

Above, left: Dennis Fehr, owner of the Wayne Township farm, has pledged his lifetime of work to protect the land led Fehr to do all he can to preserve nature.

"We try to be consistent all the time, saving as much as we can, really not seeing a footprint," Dennis said.

Commonsense

The Fehrs take a commonsense approach to the environment, making small changes to the way they live.

"The thing is, it's just a small change," Dennis said. "I would plant a tree every year to ensure the future."

[See Coupl



Before

After





www.berksnature.org



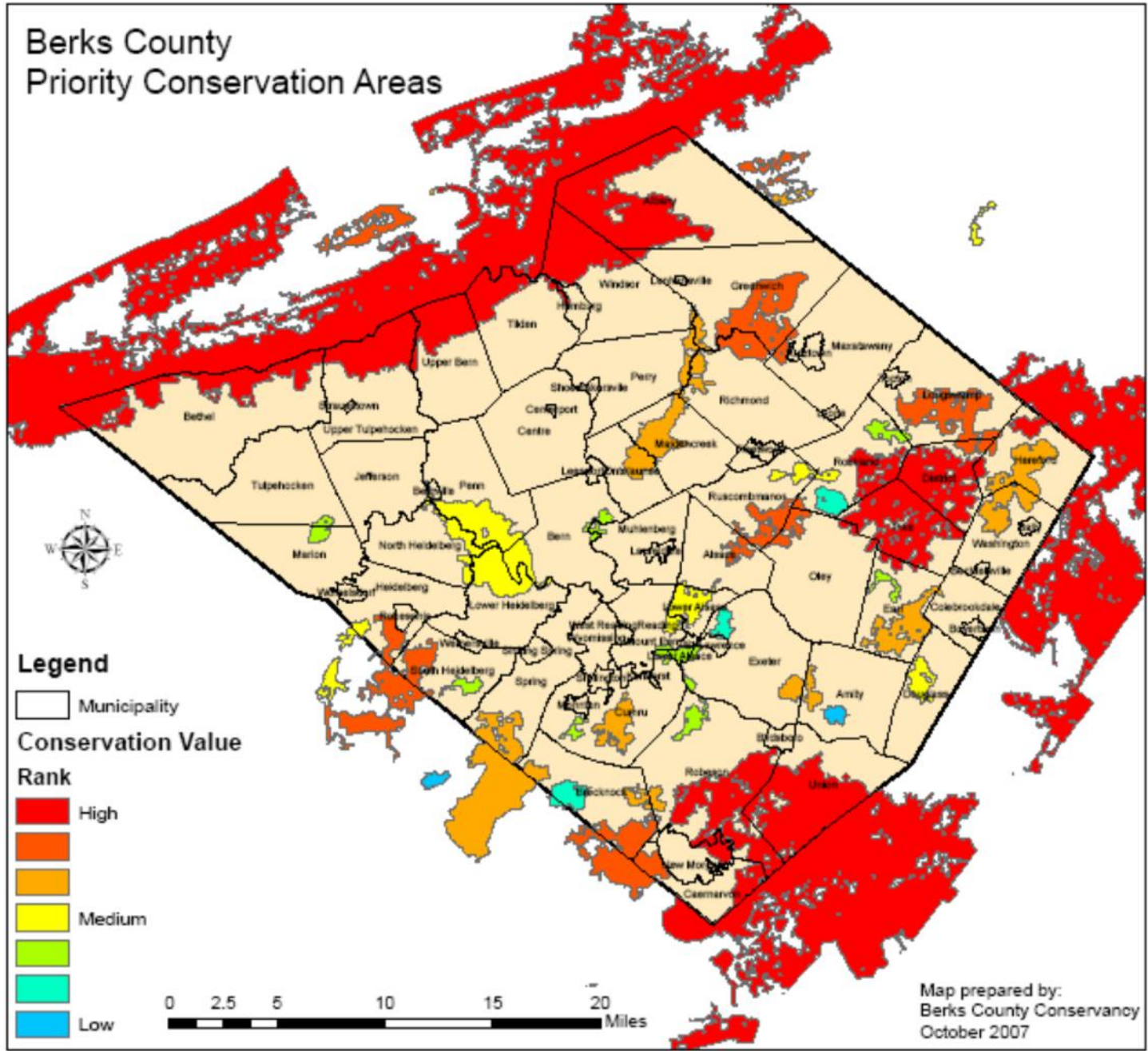
View our past SOTE publications at:
www.berksnature.org



G|W
w|O



Berks County Priority Conservation Areas



**Top 20% of the
conservation
value in Berks
County**

Map prepared by:
Berks County Conservancy
October 2007



TATTINNY RIDGE + APPALACHIAN TRAIL CONSERVATION PROJECT



Photo: Courte

as been provided by the Department of Conservation and Natural Resources,
and Conservation, Environmental Stewardship Fund.





THE KITTATINNY RIDGE CAN EASILY GET TAKEN FOR GRANTED, BUT FOR THOSE WHO LIVE NEAR IT, ITS PRESENCE SEEMS MORE THAN JUST A BACKDROP. MOST PEOPLE JUST REFER TO IT AS “THE MOUNTAIN.”

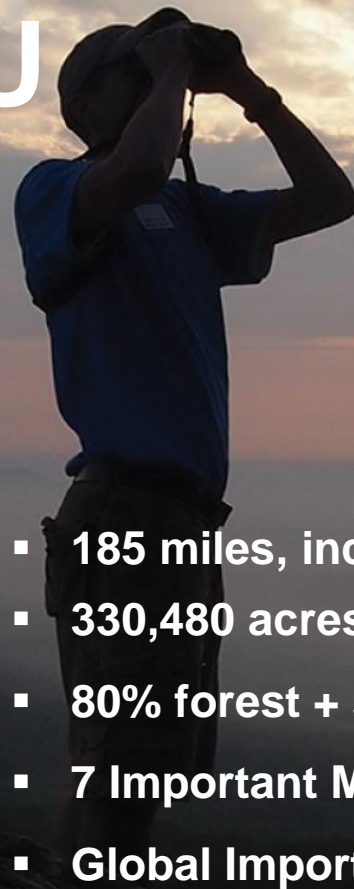
Unknown / Delaware Water Gap, PA

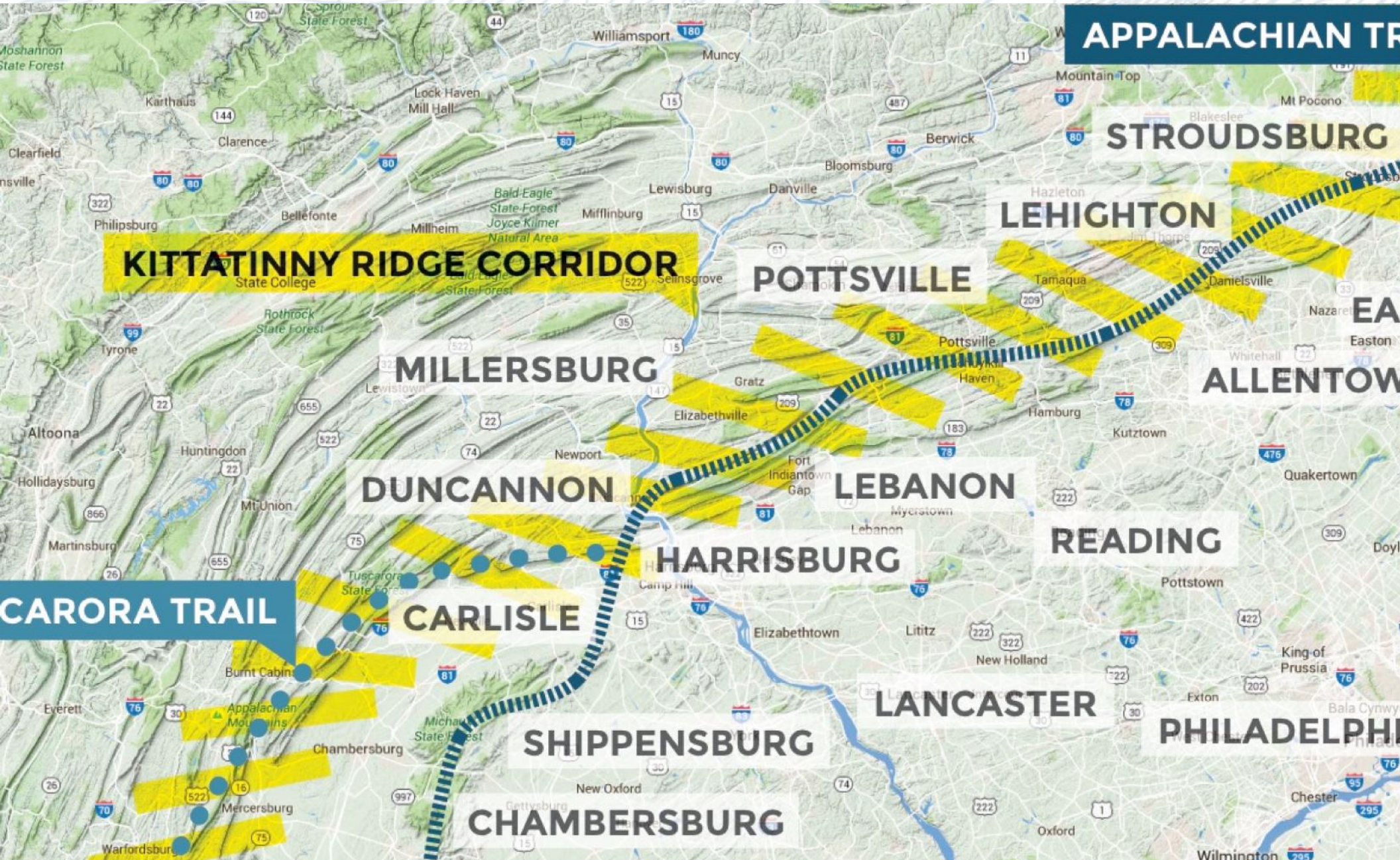


THIS LAND IS YOUR LAND. SO WHAT ARE YOU WAITING FOR?

Lenni-Lenape named it Kittatinny—“endless mountain.” Others simply call it the Mountain. To all, the Kittatinny Ridge is one of Pennsylvania’s most treasured landscapes, stretching 185 miles from the Delaware River to the Mason-Dixon Line.

- 185 miles, including 160 miles of the Appalachian
- 330,480 acres
- 80% forest + shrub habitat
- 7 Important Mammal Areas
- Global Important Bird Area





APPALACHIAN TRAIL

STROUDSBURG

LEHIGHTON

KITTATINNY RIDGE CORRIDOR

POTTSVILLE

MILLERSBURG

DUNCANNON

LEBANON

READING

HARRISBURG

CARORA TRAIL

CARLISLE

SHIPPENSBURG

CHAMBERSBURG

LANCASTER

PHILADELPHIA



THE RIDGE IS MORE THAN JUST RECREATION ADVENTURE.

- Natural resources critical to our communities
- Home to countless indigenous wildlife species
- Primary migration corridor
- Plentiful supply of clean drinking water
- Significant revenue for local economies



TODAY, THE RIDGE + APPALACHIAN TRAIL FACE FORMIDABLE THREATS.

Residential development + commercial expansion

Energy production + transmission

Pollution + illegal dumpsites

Invasive plant species

Climate change



WHAT HAPPENS ON THE RIDGE HAPPENS TO ALL OF US.

The Kittatinny Coalition is an alliance of organizations, agencies, and academic institutions working with municipalities and private landowners to conserve the natural, historic, cultural, and aesthetic resources of the Kittatinny Ridge and Corridor.

- **Conserve land**
- **Conserve native habitat + wildlife**
- **Share conservation research**
- **Provide clean + plentiful water**
- **Protect landscapes through municipal action**
- **Connect citizens**





**IT IS DIFFICULT TO HAVE A STRONG
ECONOMY WITHOUT A HEALTHY
ENVIRONMENT, PLENTY OF OPEN SPACE,
AND QUALITY HABITAT. THE KITTATINNY
RIDGE DOES AN EXCELLENT JOB
OF PROVIDING ALL THREE.**

John Rogers / Keystone Conservation Trust



1.

CONSERVE LAND



Photo: Courtesy Hawk Mountain Sanctuary

- Completed Connectivity Analysis
- Land trusts: \$400,000 for landowner outreach

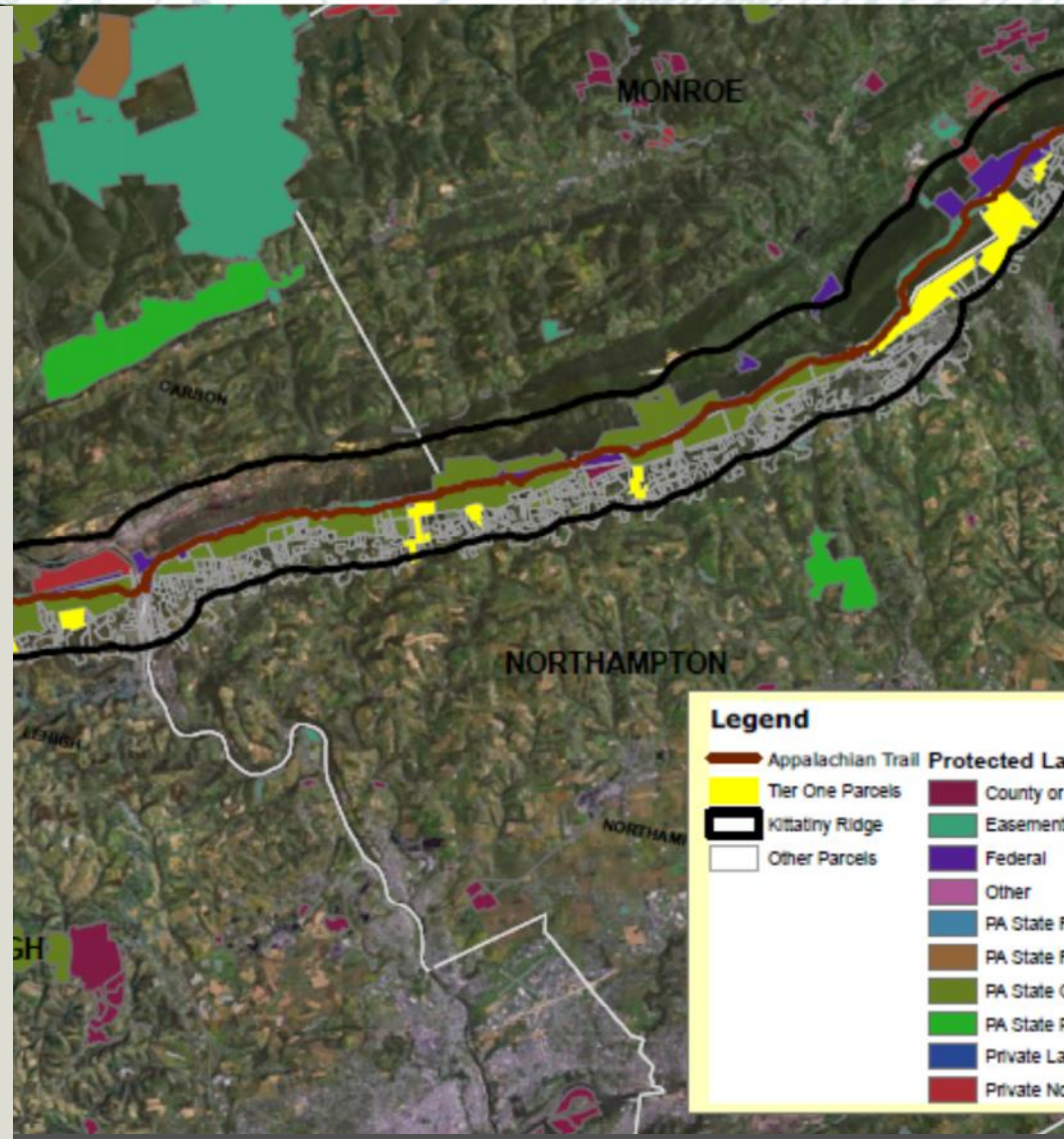


How you can help.

Permanently protect over 700 of the highest quality parcels—nearly 100,000 acres—the Kittatinny Ridge.

Educate landowners about land conservation options.

Contribute to land preservation fund.

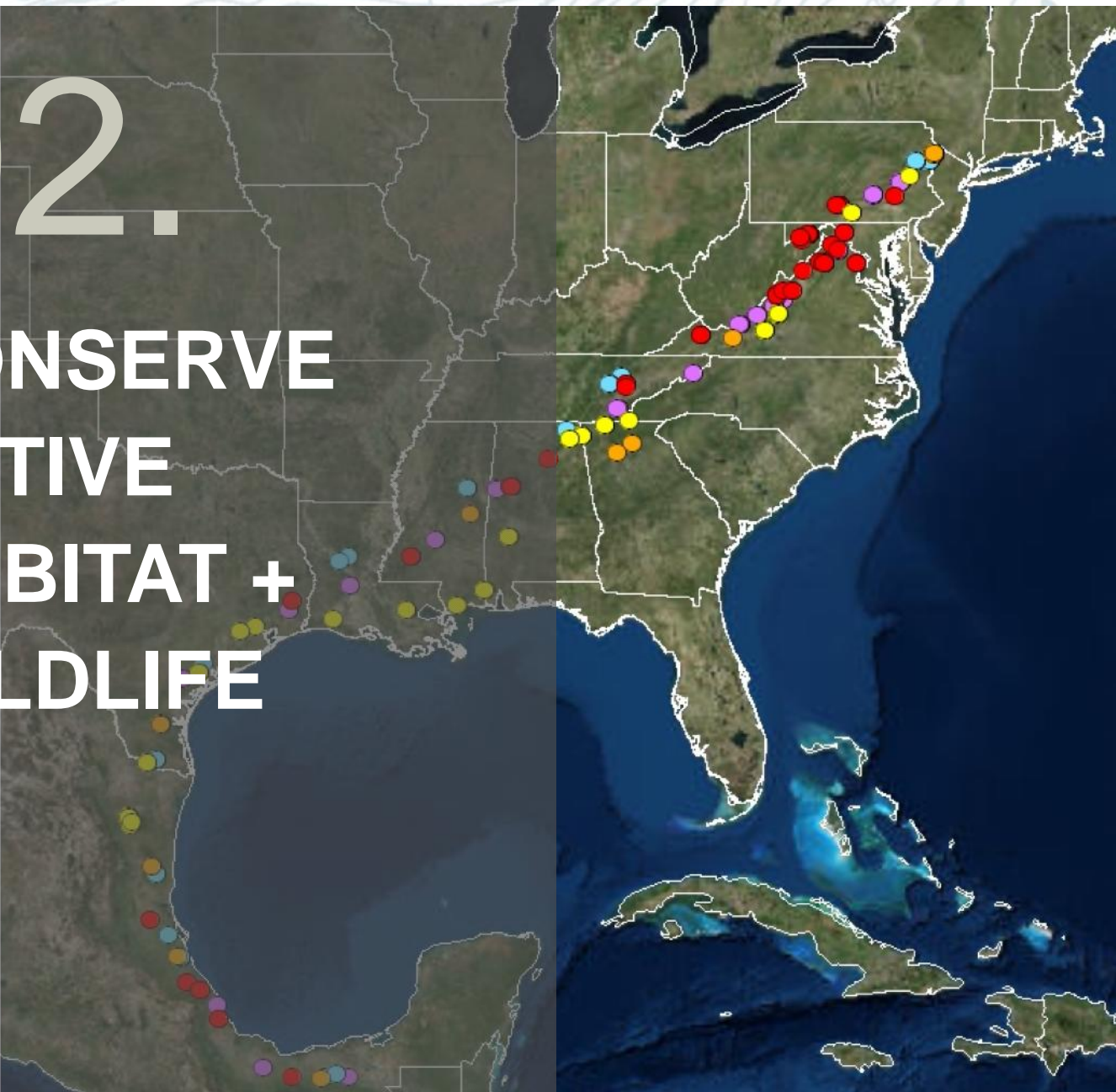


Kittatinny Prioritization: Northampton and Lehigh Counties (Tier One parcels adjacent to Protected Parcels and > = 50 acres)



2.

CONSERVE DIVERSITY HABITAT + WILDLIFE



- Global Important Bird Area
- Developing Kittatinny-wide science strategy
- Sponsored “Ridgena”



How you can help.

Conserve the diverse habitats that support species diversity.

Participate in the science community.

Share GIS layers.

Collaborate on research projects.

Connect the Coalition to other landscape-scale projects.

Engage citizens in backyard conservation, monitoring, and habitat management.



The Kittatinny Coalition sponsored “Ridgena” in support of Hawk Sanctuary’s Broad-winged Hawk Project.



3.

ARE NSERVATION SEARCH



Photo: Bill Moses

- Updated bibliography (500, 2015)
- Addendum (250, 2015)



How you can help.

Support the scientific study of the Ridge and facilitate the exchange of information.

Attend and host periodic Science Summits.

Maintain an annotated bibliography of published papers, researchers, and research topics.



Interns collect data for a pilot study, “2014 Monitoring of the Kitta Ridge (Eastern Portion): Forest Birds and Habitat Quality.”



4. PROVIDE CLEAN + SCIENTIFIC WATER



- Completed 2 “Return on Environment” reports: Berks + Lehigh/Northampton counties (each worth over \$1 billion annually)
- Reviewed Coldwater Conservation Plans on the River for issues and recommendations



How you can help.

Permanently protect our natural water resources for the benefit of residents, recreationists, ecosystems, agriculture, and economic prosperity.

Demonstrate the value to major users.

Determine the role of natural systems.

Communicate the economic value.

Partner to protect water resources.

Implement Coldwater Conservation Plans.





5.

**PROTECT
RIDGE + TRAIL
LANDSCAPES
THROUGH
MUNICIPAL
ACTION**



Photo: Courtesy Audubon PA

- Completed 53 township ordinance assessments
- Designated 4 A.T. communities



How you can help.

Educate municipal partners about the significance of the Ridge and Appalachian Mountains and why they need to be protected.

Promote municipal planning and zoning tools that support conservation and sustainable economic development.

Implement greenway and open space recommendations.

Avoid and mitigate landscape-level threats (e.g. communication towers, power and gas lines, and other infrastructure in the Ridge).



Photo: Karen Lutz, AP

Hawk Mountain hike outing at Conservation Design Workshop.



6.

CONNECT CITIZENS



Photo: Susquehanna ATC

- Branding + logo
- Website
- 5 videos
- Annual event: Bird the Ridge
- 2013-14 State of the Kittatinny Report
- Numerous teacher workshops and in-class and citizen science training for students
- Communications plan



How you can help.

Build a citizenry along the Ridge who is knowledgeable about the strong connections between environmental stewardship, community character, quality of life, and economic competition.

Share Kittatinny Coalition media.

Reach new audiences.

Organize and support Ridge events.

Promote engagement opportunities.

Identify and retain cultural resources.



The scrub landscape and rock outcroppings along the Ridge in Carbon County provide an expansive view.



HIKING BY ITSELF IS INVIGORATING, BUT STOPPING TO SEE WHAT WE ARE HEARING AND WHAT WE ARE SURROUNDED BY TAKES IT TO ANOTHER LEVEL COMPLETELY. TAKE TIME TO GET OUT THERE AND WITNESS IT.

Lorrie Preston / Susquehanna Appalachian Trail Club and Appalachian Audubon Society



THIS WORK TAKES A VILLAGE. JOIN OURS.

STATE + FEDERAL PARTICIPANTS

Commonwealth of Pennsylvania
Appalachian Trail Conservancy
Department of Conservation and Natural Resources
National Park Service: Appalachian Trail Park Office
U.S. Fish & Wildlife Service: Cherry Valley National
Wildlife Refuge

ACADEMIC PARTICIPANTS

Stroudsburg University
Pocono Mountain College
Pocono Mountain University
Lehigh University
Penn State University

CONSERVATION PARTICIPANTS

Berks Nature
Central Pennsylvania Conservancy
Fort Indiantown Gap
Hawk Mountain Sanctuary
Lebanon Valley Conservancy
Lehigh Gap Nature Center
Manada Conservancy
Natural Lands Trust
Pocono Heritage Land Trust
The Nature Conservancy
Wildlands Conservancy



THE RIDGE IS OUR GIFT. LET'S GIVE BACK.



HELP US PROTECT THE RIDGE.
VISIT KITTATINNYRIDGE.ORG

CONTACT:

Anne Ortiz
Audubon Pennsylvania
Program Manager, Landscape Conservation
aortiz@audubon.org

Kim Murphy

President
Berks Nature
Kim.murphy@berksnature.org

